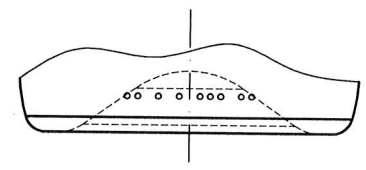
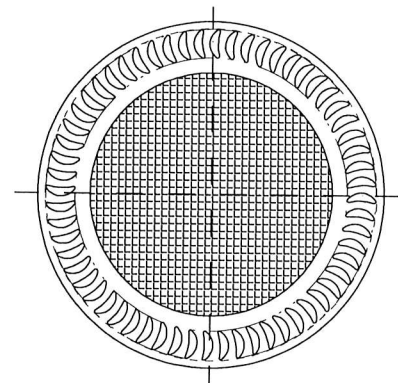
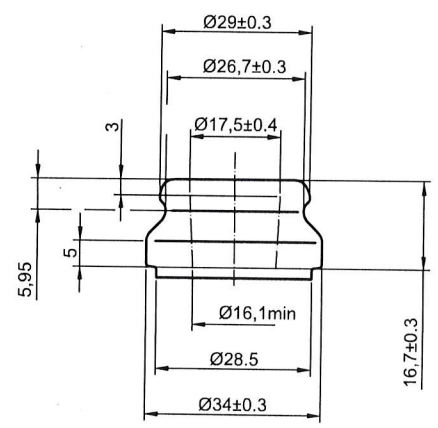
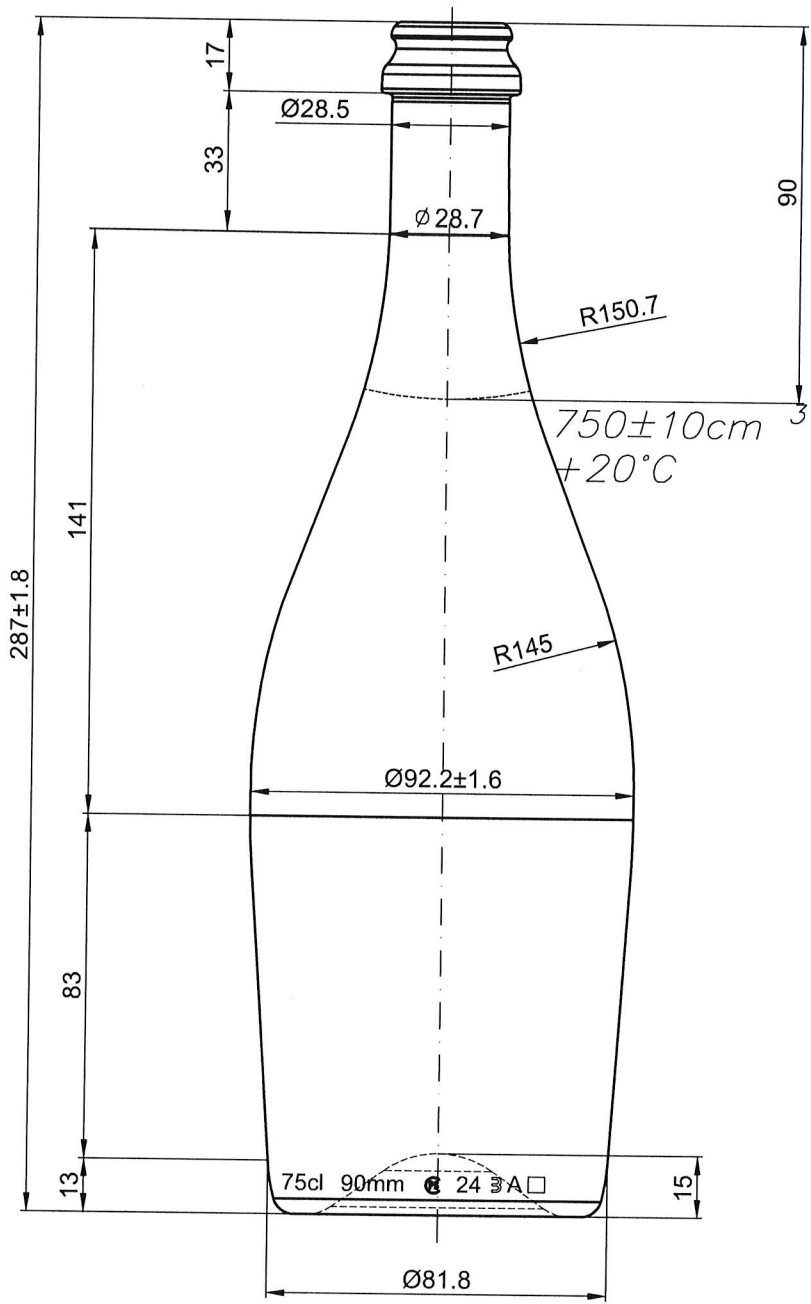


**SUBJECT: 0.75L COLIO LIGHT 600GR**

Anexa nr.1

Sr No	Description	Material	Quantity	
			Trial	Full set
1	BLOW MOULD	C I+COL(NECK, BASE&PARTING LINE)+LOCK		24
2	BOTTOM PLATE	BRONZE+COL(MATCHING EDGE)		24
3	BLANK MOULD	C I+COL(NECK, BASE&PARTING LINE)+LOCK		28
4	BAFFLE	BRONZE+COL(MATCHING EDGE)		28
5	NECK RING	BRONZE+COL(FULL CAVITY)		50
6	GUIDE PLATE	C I+COL(MATCHING EDGE)		60
7	PLUNGER	C I+COL(MATCHING EDGE)		50
8	TAKE OUT TONG	MINOX/BRONZE		30
9	FUNNEL	CAST IRON		28
10	BLOW HEAD	CAST IRON		24
11	BLOW HEAD TUBE	STEEL		24



**Characteristics**  
 Nominal capacity in terms of filling, cm<sup>3</sup> - 750±10  
 Weight recommended, g - 600  
 Thickness of walls, at application of hardening, not less - 1.5 mm  
 Thickness of a bottom at application of hardening, not less, - 2.5 mm  
 Thermal stability, difference of temperatures, not less, °C - 40  
 Internal hydrostatic pressure during 60±2s not less, kgf/cm<sup>2</sup> - 14  
**Maximum deviation**  
 from a vertical axis not more, mm 4.1  
 for height, mm ±1.8  
 for diameter of the body, mm ±1.6  
 other sizes are given for manufacturing set of forms

Chang.	Letter	Document N	Signature	Date
Designed				
Constr-r principal				
Dir of manufat.				

The preliminary drawing

Colio Light-750

Flint

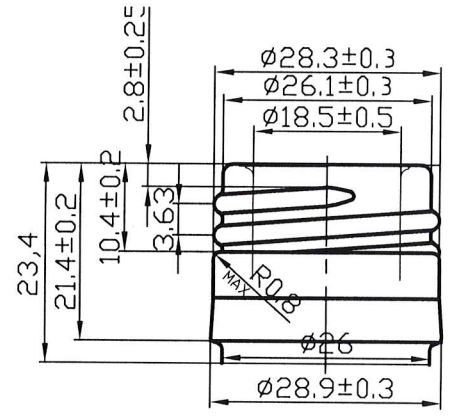
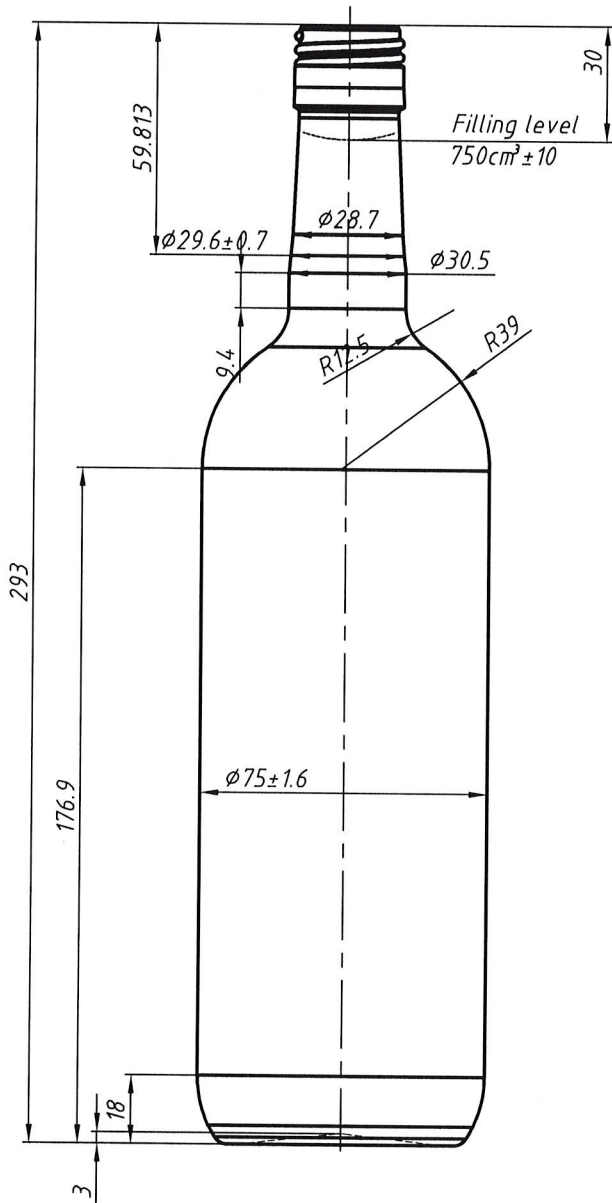
Letter	Weight	Scale
		1:1
Sheet	Sheets	1

**FSC**

**SUBJECT: 0.75LLEGERA 400GR**

Anexa nr.2

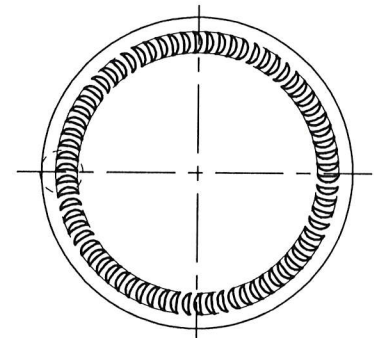
Sr No	Description	Material	Quantity	
			Trial	Full set
1	BLOW MOULD	C I+COL(NECK, BASE&PARTING LINE)+LOCK		24.00
2	BOTTOM PLATE	C I+COL(MATCHING EDGE)		24.00
3	BLANK MOULD	C I+COL(NECK, BASE&PARTING LINE)+LOCK		28.00
4	BAFFLE	C I+COL(MATCHING EDGE)		28.00
5	NECK RING	BRONZE+COL(FULL CAVITY)		50.00
6	GUIDE PLATE	C I+COL(MATCHING EDGE)		60.00
7	PLUNGER	C I+COL(MATCHING EDGE)		50.00
8	TAKE OUT TONG	MINOX/BRONZE		30.00
9	FUNNEL	CAST IRON		28.00
10	BLOW HEAD	CAST IRON		24.00
11	BLOW HEAD TUBE	STEEL		24.00



The controllable dimensions of a glass finish :

- Ø28,3±0.3
- Ø26,1±0.3
- Ø28,9±0.3
- Ø29,6±0.4
- Ø18.5±0.5 should be on depth 10 mm from a finish end face
- Ø16.1min in other part of a mouth

Finish type BVS



BOTTOM VIEW

Characteristics

Nominal capacity in terms of filling, cm<sup>3</sup> - 750±10  
 Weight recommended, g - 4.15

Thickness of walls, not less - 1.2 mm  
 Thickness of a bottom at application of hardening, not less, - 2.2 mm  
 Thermal stability, difference of temperatures, not less, °C - 40  
 Internal hydrostatic pressure during 60±2s not less, kgf/cm<sup>2</sup> - 5

Maximum deviation

from a vertical axis not more, mm 4.3  
 of height, mm ±1.8  
 of diameter of the body, mm ±1.6  
 other sizes are given for a manufacturing set of forms

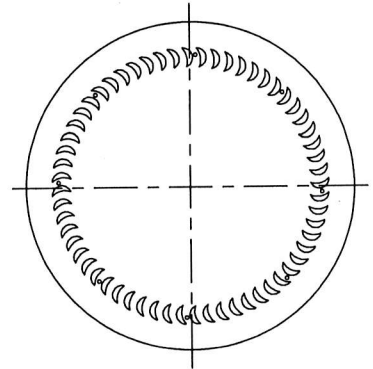
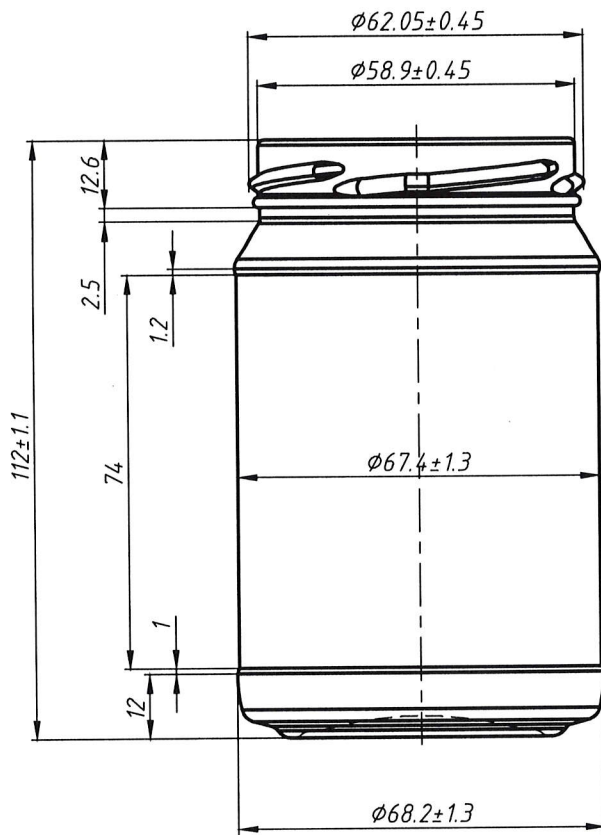
Original accession N	The signature and date
Instead of accession N	Duplicate accession N
The signature and date	The signature and date

Chang	Letter	Document N	Signature	Date
Designed		Cosovschi P.		28.01.25
Constr-r principal		Cosovschi P.		28.01.25
Dir. of manuf.		Balataji I.		

A.		
Bottle "LEGERA-BVS-750"		Letter Weight Scale
Sheet	Sheets	1
Glass colourless		1:1,4
FSC		FS

**SUBJECT: JAR III-63-314 VESNA****Anexa nr.3**

Sr No	Description	Material	Quantity	
			Trial	Full set
1	BLOW MOULD	C I+COL(NECK, BASE&PARTING LINE)+LOCK		24
2	BOTTOM PLATE	C I+COL(MATCHING EDGE)		24
3	BLANK MOULD	C I+COL(NECK, BASE&PARTING LINE)+LOCK		28
4	BAFFLE	CAST IRON		28
5	INSERT	STEEL+COL(FULL CAVITY)		60
6	PLUNGER	STEEL+COL(MATCHING EDGE)		50
7	COOLER	MILD STEEL		40
8	NECK RING	BRONZE+COL(FULL CAVITY)		50
9	GUIDE PLATE	C I+COL(MATCHING EDGE)		50
10	BLOW HEAD	CAST IRON		24
11	BLOW HEAD TUBE	MILD STEEL		24
12	TAKE OUT TONG	MINOX/BRONZE		30



Bottom view

Marking  
(on the opposite party of the jar)

Controllable sizes of a finish:  
 $\phi 62.05 \pm 0.45$   
 $\phi 58.9 \pm 0.45$

The finish III-63

Characteristics

Full capacity,  $\text{cm}^3$  -  $314 \pm 6$   
 Weight recommended, g - 170

- Thickness of walls not less, mm - 1.2
- Thickness of a bottom not less, mm - 2.0
- Thermal stability, difference of temperatures, not less,  $^{\circ}\text{C}$  - 40
- Internal hydrostatic pressure during 5s not less,  $\text{kgf}/\text{cm}^2$  - 3
- Resistance to effort of compression not less, N - 2200

Maximum deviations

- on height, mm  $\pm 1.1$
- on diameter, mm  $\pm 1.3$
- Concavity of an end face of a nimbous mouth no more, mm 0.3
- Other sizes are given for the making molds

Chang.	Letter	Document N	Signature	Date
	Designed	Cosovschi P.		30.01.25
	Constr.-r principal	Cosovschi P.		30.01.25
	Dir of manufat.	Baltaji I.		

A.

Jar III-63-314  
"VESNA"

Glass colourless

Letter	Weight	Scale
		1:1
Sheet		Sheets 1

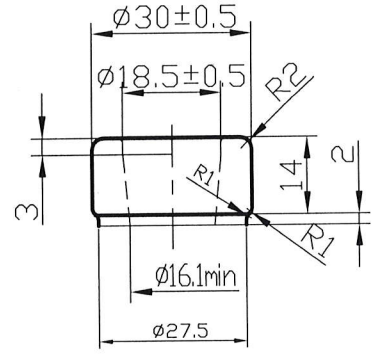
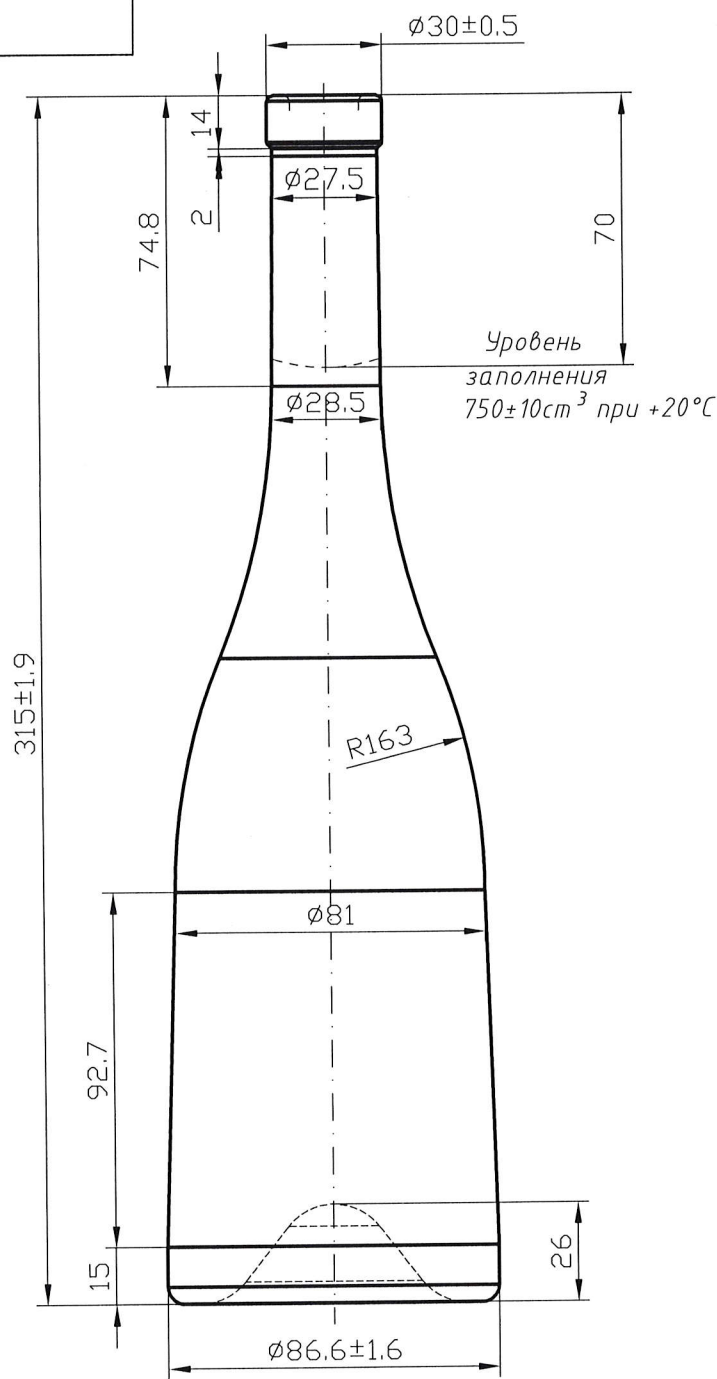


Original accession N	The signature and date
Instead of accession N	Duplicate accession N
The signature and date	The signature and date

**SUBJECT: 0.75L ESPANOLA 450GR**

Anexa nr.4

Sr No	Description	Material	Quantity	
			Trial	Full set
1	BLOW MOULD	C I+COL(NECK, BASE&PARTING LINE)+LOCK		24
2	BOTTOM PLATE	BRONZE+COL(MATCHING EDGE)		24
3	BLANK MOULD	C I+COL(NECK, BASE&PARTING LINE)+LOCK		28
4	BAFFLE	BRONZE+COL(MATCHING EDGE)		28
5	NECK RING	BRONZE+COL(FULL CAVITY)		50
6	GUIDE PLATE	C I+COL(MATCHING EDGE)		60
7	PLUNGER	C I+COL(MATCHING EDGE)		50
8	TAKE OUT TONG	MINOX/BRONZE		30
9	FUNNEL	CAST IRON		28
10	BLOW HEAD	CAST IRON		24
11	BLOW HEAD TUBE	STEEL		24



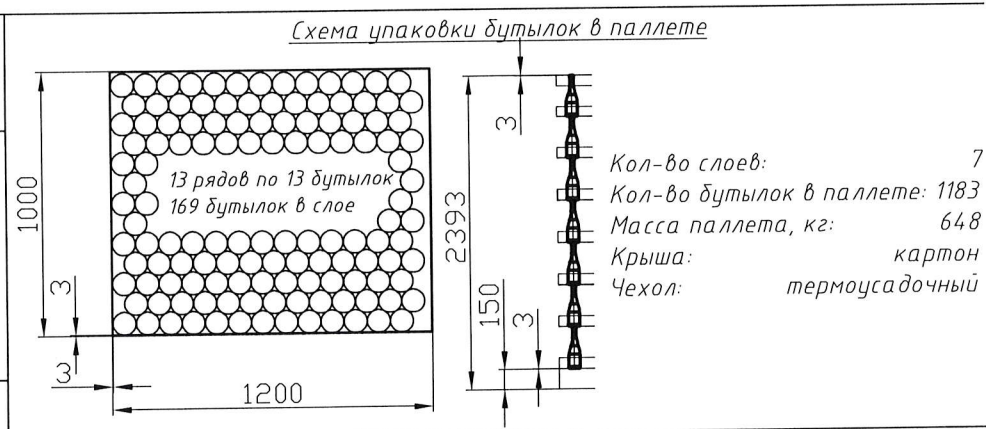
Контролируемые  
размеры венчика  
горловины:  
 $\phi 30 \pm 0.5$   
 $\phi 18.5 \pm 0.5$  должен  
 быть на глубине до  
 3мм от торца  
 венчика  
 $\phi 16.1 \text{ min}$  в остальной  
 части горловины  
 Венчик типа VP4A

Инв. N подл.	Подпись и дата
Взам. инв. N	Инв. N дубл.
Подпись и дата	Подпись и дата
Инв. N подл.	Подпись и дата

**Техническая характеристика**  
 Номинальная вместимость, см<sup>3</sup> - 750  
 Масса рекомендуемая, г - 450

**SM 195:1999 ; ГОСТ 10117.1**  
 Толщина стенок не менее, мм-1,4, при  
 нанесении упрочнения-1,2  
 Толщина дна не менее, мм-2,5, при  
 нанесении упрочнения-2,2  
 Термостойкость, перепад температур, не  
 менее, °C - 40  
 Внутреннее гидростатическое давление в  
 течение 60±2с не менее, kgf/cm<sup>2</sup>-5

**Предельные отклонения**  
 от вертикальной оси не более, мм 3.5  
 по высоте, мм ±1.9  
 по диаметру, мм ±1.6  
 Остальные размеры даны для изготовления  
 формокомплекта



Изм.	Лит.	N докум.	Подпись	Дата
Разработ.		Косовский П.		24.02.23
Гл. констр.		Косовский П.		24.02.23
Дир. пр-ва		Балтажи И.		

А.

Бутылка  
 "Espanola"-VPзв-750

Стекло бесцветное

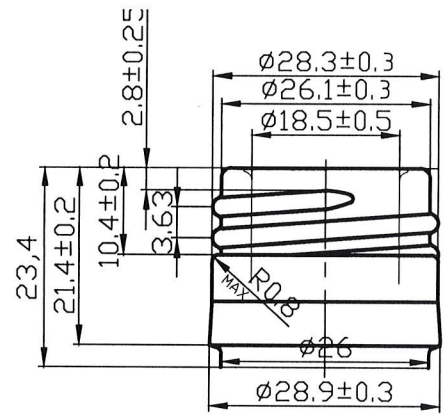
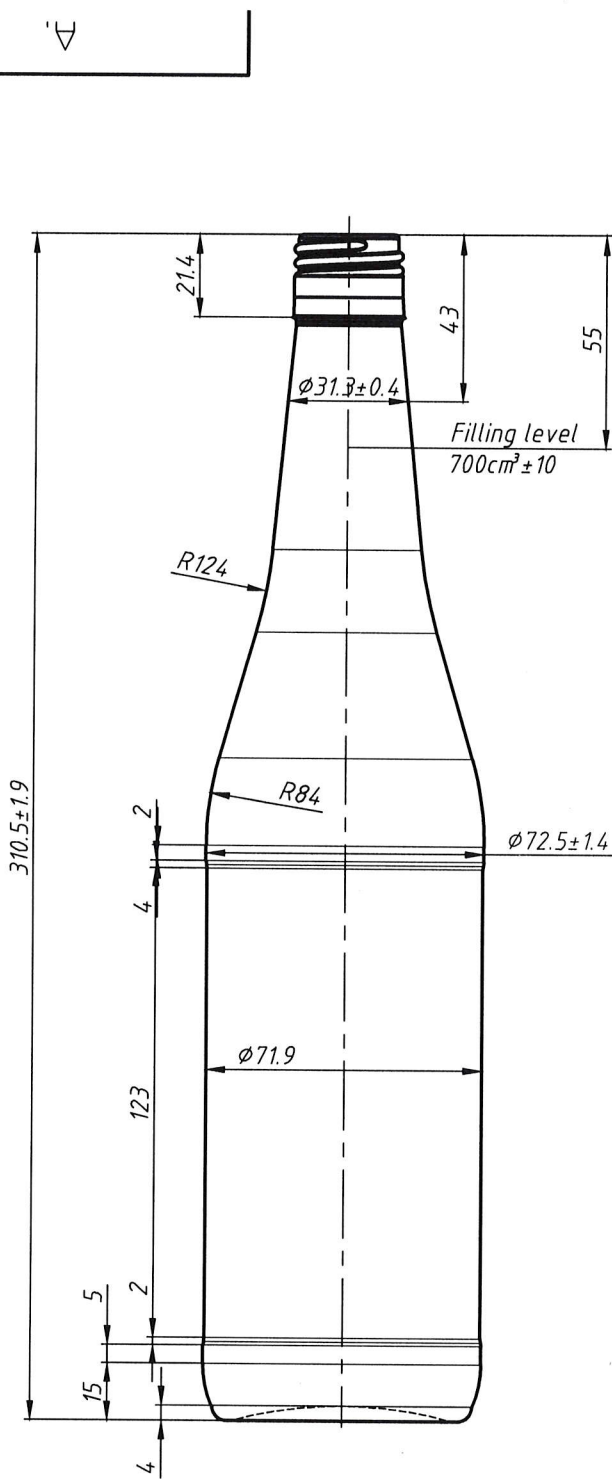
Лит.	Масса	Масштаб
		1:1,4
Лист	Листов	1

FSC

**SUBJECT: 0.7L Zachos**

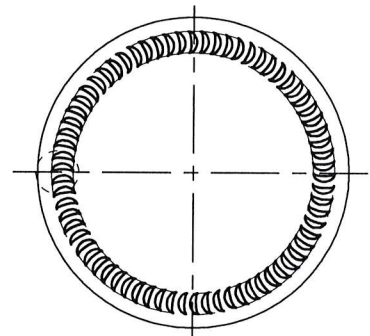
Anexa nr.5

Sr No	Description	Material	Quantity	
			Trial	Full set
1	BLOW MOULD	C I+COL(NECK, BASE&PARTING LINE+LOCK)		24
2	BOTTOM PLATE	C I+COL(FULL CAVITY)		24
3	BLANK MOULD	C I+COL(NECK, BASE&PARTING LINE+LOCK)		28
4	BAFFLE	C I+COL(MATCHING EDGE)-(special)		28
5	NECK RING	BRONZE+COL(FULL CAVITY)		50
6	GUIDE PLATE	C I+COL(MATCHING EDGE)		60
7	PLUNGER	C I+COL(MATCHING EDGE)		50
8	BLOW HEAD	CAST IRON		24
9	TAKE OUT TONG	MINOX/BRONZE		30
11	BLOW HEAD TUBE	MILD STEEL		24
12	FUNNEL	CAST IRON		28



The controllable dimensions of a glass finish :

- Ø28,3±0.3
  - Ø26,1±0.3
  - Ø28,9±0.3
  - Ø29,6±0.4
  - Ø18.5±0.5 should be on depth 10 mm from a finish end face
  - Ø16.1min in other part of a mouth
- Finish type BVS



BOTTOM VIEW

Characteristics

Nominal capacity in terms of filling, cm<sup>3</sup> - 750±10  
 Weight recommended, g - 383

Thickness of walls, not less - 1.2 mm  
 Thickness of a bottom at application of hardening, not less, - 2.2 mm  
 Thermal stability, difference of temperatures, not less, °C - 40  
 Internal hydrostatic pressure during 60±2s not less, kgf/cm<sup>2</sup> - 5

Maximum deviation

from a vertical axis not more, mm 4.3  
 of height, mm ±1.9  
 of diameter of the body, mm ±1.4  
 other sizes are given for a manufacturing set of forms

Original accession N	The signature and date
Instead of accession N	Duplicate accession N
The signature and date	The signature and date

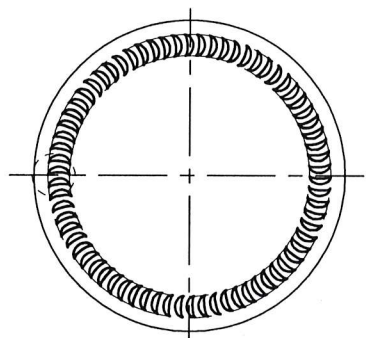
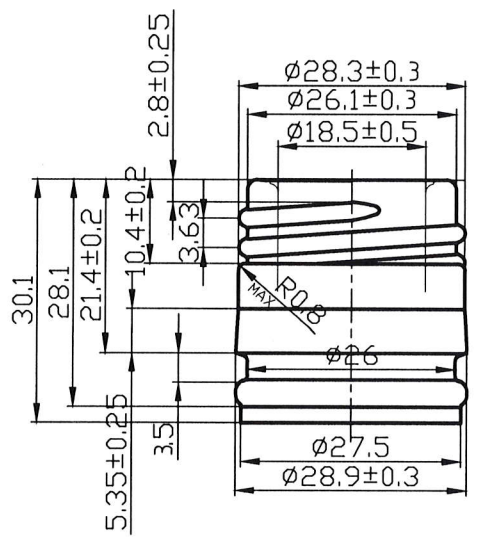
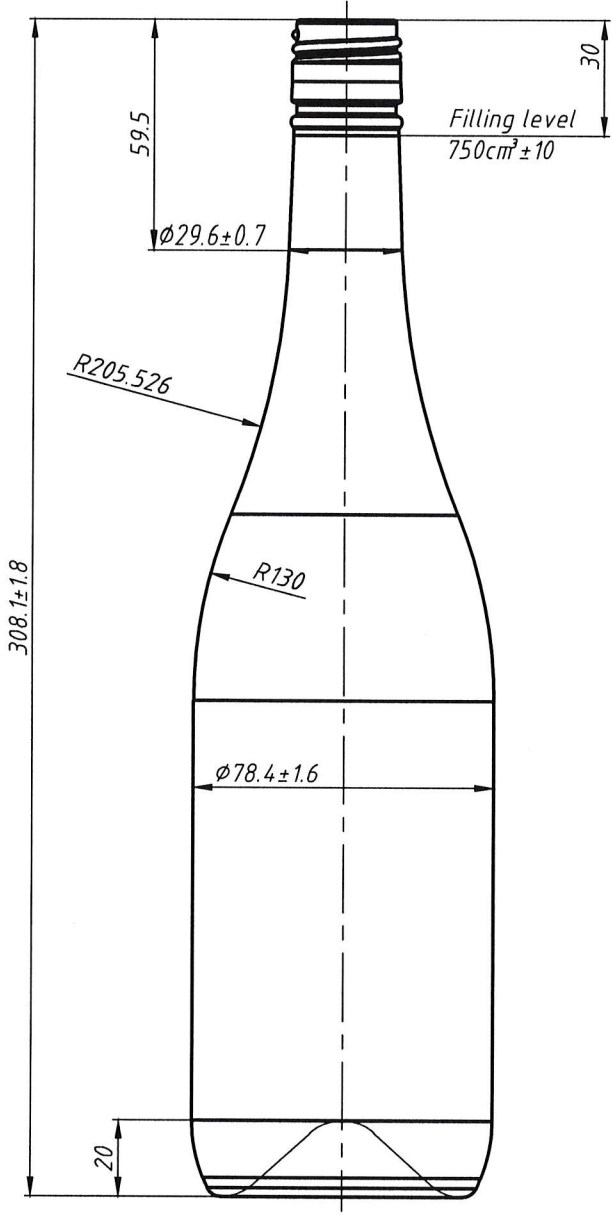
Change	Letter	Document N	Signature	Date
Designed		Cosovschi P.		06.02.25
Constr-r principal		Cosovschi P.		06.02.25
Dir. of manuf.		Balataji I.		

A.			
Bottle "ZACHOS-BVS-700"	Letter	Weight	Scale
			1:1.4
Glass colourless	Sheet	Sheets	1
FSC		FS	

**SUBJECT: 0.75L BORGONA 480GR**

Anexa nr.6

Sr No	Description	Material	Quantity
			Full set
1	BLOW MOULD	C I+COL(NECK, BASE&PARTING LINE)+LOCK	24.00
2	BOTTOM PLATE	BRONZE+COL(MATCHING EDGE)	24.00
3	BLANK MOULD	C I+COL(NECK, BASE&PARTING LINE)+LOCK	28.00
4	BAFFLE	BRONZE+COL(MATCHING EDGE)	28.00
5	NECK RING	BRONZE+COL(FULL CAVITY)	50.00
6	GUIDE PLATE	C I+COL(MATCHING EDGE)	60.00
7	PLUNGER	C I+COL(MATCHING EDGE)	50.00
8	TAKE OUT TONG	MINOX/BRONZE	30.00
9	FUNNEL	CAST IRON	28.00
10	BLOW HEAD	CAST IRON	24.00
11	BLOW HEAD TUBE	STEEL	24.00
12	NECK RING VN	BRONZE+COL(FULL CAVITY)	50.00
13	GUIDE PLATE VN	C I+COL(MATCHING EDGE)	60.00
14	PLUNGER VN	C I+COL(MATCHING EDGE)	50.00
15	BLOW HEAD VN	CAST IRON	24.00
16	BLOW HEAD TUBE VN	STEEL	24.00
17	NECK RING VIP	BRONZE+COL(FULL CAVITY)	50.00
18	GUIDE PLATE VIP	C I+COL(MATCHING EDGE)	60.00
19	PLUNGER VIP	C I+COL(MATCHING EDGE)	50.00
20	BLOW HEAD VIP	CAST IRON	24.00
21	BLOW HEAD TUBE VIP	STEEL	24.00



BOTTOM VIEW

Characteristics

Nominal capacity in terms of filling, cm<sup>3</sup> - 750±10  
 Weight recommended, g - 480

Thickness of walls, not less - 1.2 mm

Thickness of a bottom at application of hardening, not less, - 2.2 mm

Thermal stability, difference of temperatures, not less, °C - 40

Internal hydrostatic pressure during 60±2s not less, kgf/cm<sup>2</sup> - 5

Maximum deviation

from a vertical axis not more, mm 4.3  
 of height, mm ±1.8  
 of diameter of the body, mm ±1.6  
 other sizes are given for a manufacturing set of forms

Original accession N The signature and date  
 Instead of accession N Duplicate accession N The signature and date

Chang	Letter	Document N	Signature	Date
Designed		Cosovschi P.		30.01.25
Constr-r principal		Cosovschi P.		30.01.25
Dir. of manuf.		Balataji I.		

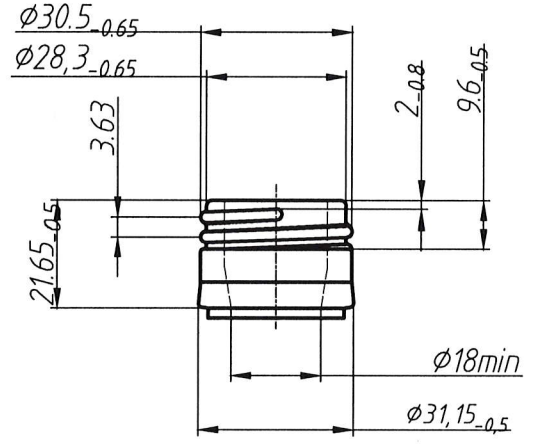
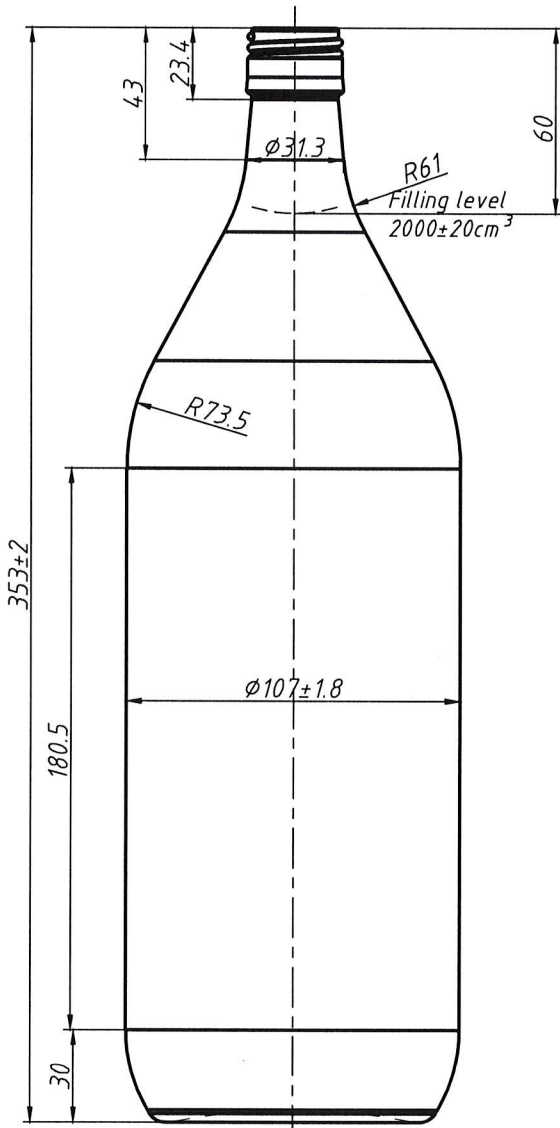
A.		
Bottle "BORGONA-BVS-750"		
Letter	Weight	Scale
		1:1.4
Sheet	Sheets 1	
Glass colourless		
FSC		

**SUBJECT: 2.0L VODKA**

Anexa nr.7

Sr No	Description	Material	Quantity	
			Trial	Full set
1	BLOW MOULD	C I+COL(NECK, BASE&PARTING LINE)		24
2	BOTTOM PLATE	C I+COL(MATCHING EDGE)		24
3	BLANK MOULD	C I+COL(NECK, BASE&PARTING LINE)		28
4	BAFFLE	C I+COL(MATCHING EDGE)		28
5	NECK RING	BRONZE+COL(FULL CAVITY)		50
6	GUIDE PLATE	C I+COL(MATCHING EDGE)		60
7	PLUNGER	C I+COL(MATCHING EDGE)		50
8	TAKE OUT TONG	MINOX/BRONZE		30
9	FUNNEL	CAST IRON		28
10	BLOW HEAD	CAST IRON		24
11	BLOW HEAD TUBE	STEEL		24

A.



**Characteristics**

Nominal capacity, cm<sup>3</sup> -2000±20

Weight recommended, g - 74.0

Thickness of walls not less-1.2 mm,

Thickness of a bottom not less-2.4 mm,

Thermal stability, difference of temperatures, not less, °C -35

Internal hydrostatic pressure during 60±2s not less, kgf/cm<sup>2</sup>-4

**Maximum deviations**

from a vertical axis not more, mm 4.55

on height, mm ±2.0

on diameter of the body, mm ±1.8

other sizes are given for manufacturing set of forms

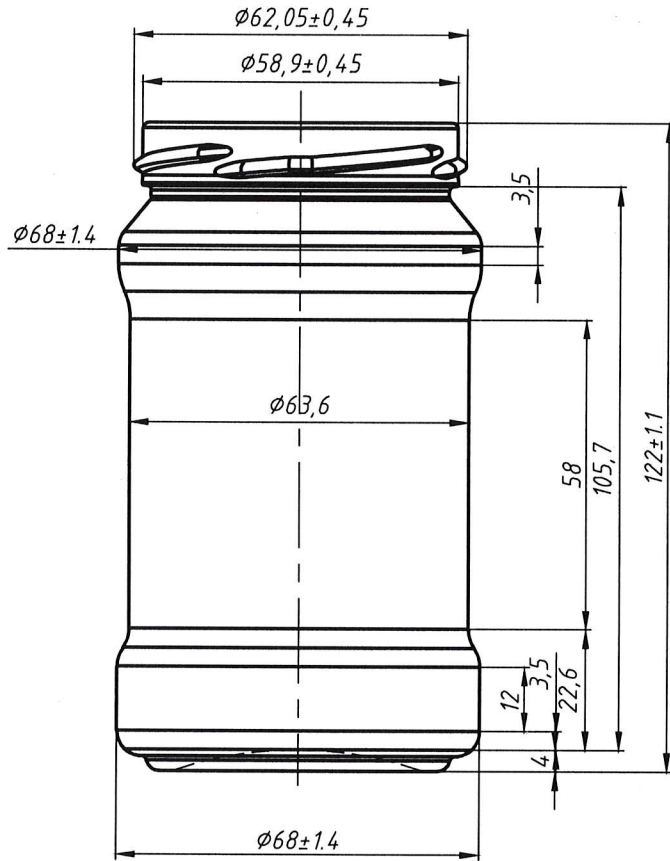
Original accession N	The signature and date	Instead of accession N	Duplicate accession N	The signature and date	A.		
Chang	Letter	Document N	Signature	Date			
					Letter	Weight	Scale

**SUBJECT: JAR III-63-314 STAR**

Anexa nr.8

Sr No	Description	Material	Quantity	
			Trial	Full set
1	BLOW MOULD	C I+COL(NECK, BASE&PARTING LINE)+LOCK		24
2	BOTTOM PLATE	C I+COL(MATCHING EDGE)		24
3	BLANK MOULD	C I+COL(NECK, BASE&PARTING LINE)+LOCK		28
4	BAFFLE	CAST IRON		28
5	INSERT	STEEL+COL(FULL CAVITY)		60
6	PLUNGER	STEEL+COL(MATCHING EDGE)		50
7	COOLER	MILD STEEL		40
8	NECK RING	BRONZE+COL(FULL CAVITY)		50
9	GUIDE PLATE	C I+COL(MATCHING EDGE)		50
10	BLOW HEAD	CAST IRON		24
11	BLOW HEAD TUBE	MILD STEEL		24
12	TAKE OUT TONG	MINOX/BRONZE		30

A.



The controllable sizes  
of a glass finish :  
 $\phi 62,05 \pm 0,45$   
 $\phi 58,9 \pm 0,45$

Finish type III-63

Characteristics

- Nominal capacity,  $cm^3$  -314
- Full capacity,  $cm^3$  -314±9
- Weight recommended, g -170
- Thickness of walls not less, mm-1,2
- Thickness of a bottom not less, mm-2,0
- Thermal stability, difference of temperatures, not less, °C -40
- Internal hydrostatic pressure during 5s not less,  $kgf/cm^2$  -3
- Resistance to effort of compression not less, N-2200

Maximum deviations

- on height, mm  $\pm 1,1$
- on diameter, mm  $\pm 1,4$
- Concavity of an end face of a nimbus mouth no more, mm 0,3
- Other dimensions are for manufacturing of mold sets

Chang	Letter	Document N	Signature	Date
	Designed			
	Chief constr.			
	Dir. of manuf.			

A.

Jar  
III-63-314 "STAR"

FLINT

Letter	Weight	Scale
		1:1
Sheet		Sheets 1
FSC		FS

Original accession N

The signature and date

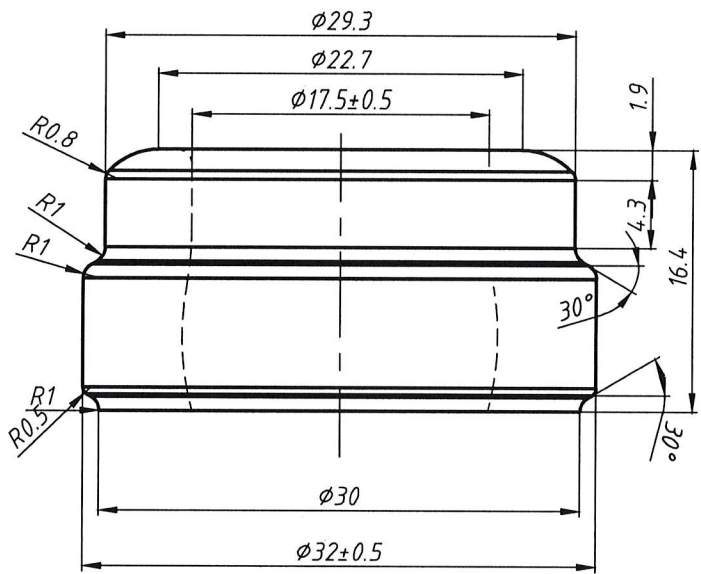
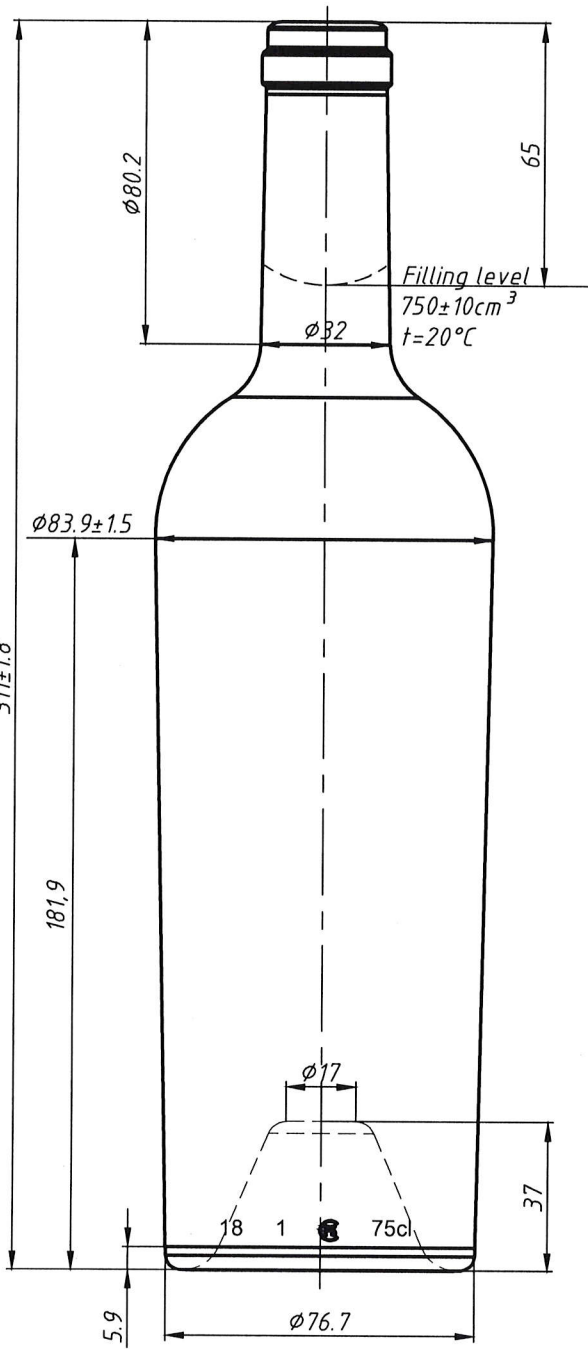
Instead of accession N Duplicate accession N

The signature and date

**SUBJECT: 0.75L STORICA VIP 800GR**

Anexa nr.9

Sr No	Description	Material	Quantity	
			Trial	Full set
1	BLOW MOULD	C I+COL(NECK, BASE&PARTING LINE)+LOCK		24
2	BOTTOM PLATE	BRONZE+COL(MATCHING EDGE)		24
3	BLANK MOULD	C I+COL(NECK, BASE&PARTING LINE)+LOCK		28
4	BAFFLE	BRONZE+COL(MATCHING EDGE)		28
5	NECK RING	BRONZE+COL(FULL CAVITY)		50
6	GUIDE PLATE	C I+COL(MATCHING EDGE)		60
7	PLUNGER	C I+COL(MATCHING EDGE)		50
8	TAKE OUT TONG	MINOX/BRONZE		30
9	FUNNEL	CAST IRON		28
10	BLOW HEAD	CAST IRON		24
11	BLOW HEAD TUBE	STEEL		24



**Characteristics**

Nominal capacity in terms of filling, cm<sup>3</sup> - 750±10  
 Weight recommended, g - 800

Thickness of walls, not less - 1.2 mm  
 Thickness of a bottom, not less, - 2.2 mm  
 Thermal stability, difference of temperatures, not less, °C - 40  
 Internal hydrostatic pressure during 60±2s not less, kgf/cm<sup>2</sup> - 5

**Maximum deviation**

from a vertical axis not more, mm 4.1  
 of height, mm ±1.8  
 of diameter of the body, mm ±1.6  
 other sizes are given for a manufacturing set of forms

Original accession N

The signature and date

Instead of accession N Duplicate accession N

The signature and date

Chang.	Letter	Document N	Signature	Date
Designed				
Constr-r principal				
Dir. of manuf.				

The preliminary drawing

Bottle  
 "Storica heavy" - VP<sub>3F</sub>-750

FLINT

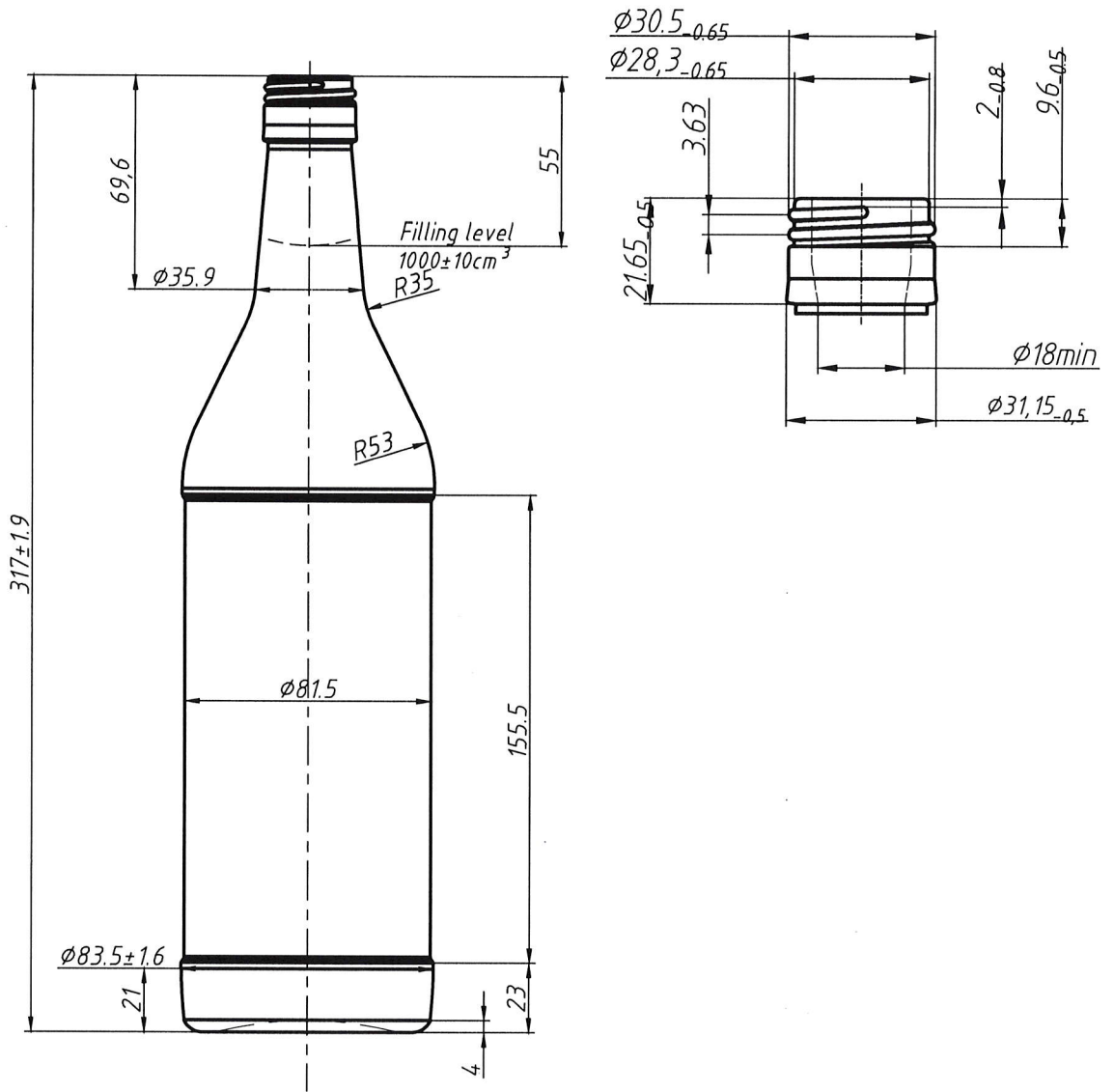
Letter	Weight	Scale
		1:1.33
Sheet	Sheets	1
FSC		

**SUBJECT: 1.0L VERMUT 465GR**

Anexa nr.10

Sr No	Description	Material	Quantity	
			Trial	Full set
1	BLOW MOULD	C I+COL(NECK, BASE&PARTING LINE)+LOCK		24
2	BOTTOM PLATE	C I+COL(MATCHING EDGE)		24
3	BLANK MOULD	C I+COL(NECK, BASE&PARTING LINE)+LOCK		28
4	BAFFLE	C I+COL(MATCHING EDGE)		28
5	NECK RING	BRONZE+COL(FULL CAVITY)		50
6	GUIDE PLATE	C I+COL(MATCHING EDGE)		60
7	PLUNGER	C I+COL(MATCHING EDGE)		50
8	TAKE OUT TONG	MINOX/BRONZE		30
9	FUNNEL	CAST IRON		28
10	BLOW HEAD	CAST IRON		24
11	BLOW HEAD TUBE	STEEL		24

A.



Characteristics

Nominal capacity, cm<sup>3</sup> - 1000±10

Weight recommended, g - 465

Thickness of walls not less - 1.2 mm,

Thickness of a bottom not less - 2.4 mm,

Thermal stability, difference of temperatures, not less, °C - 35

Internal hydrostatic pressure during 60±2s not less, kgf/cm<sup>2</sup> - 4

Maximum deviations

from a vertical axis not more, mm 4.55

on height, mm ±1.9

on diameter of the body, mm ±1.6

other sizes are given for manufacturing set of forms

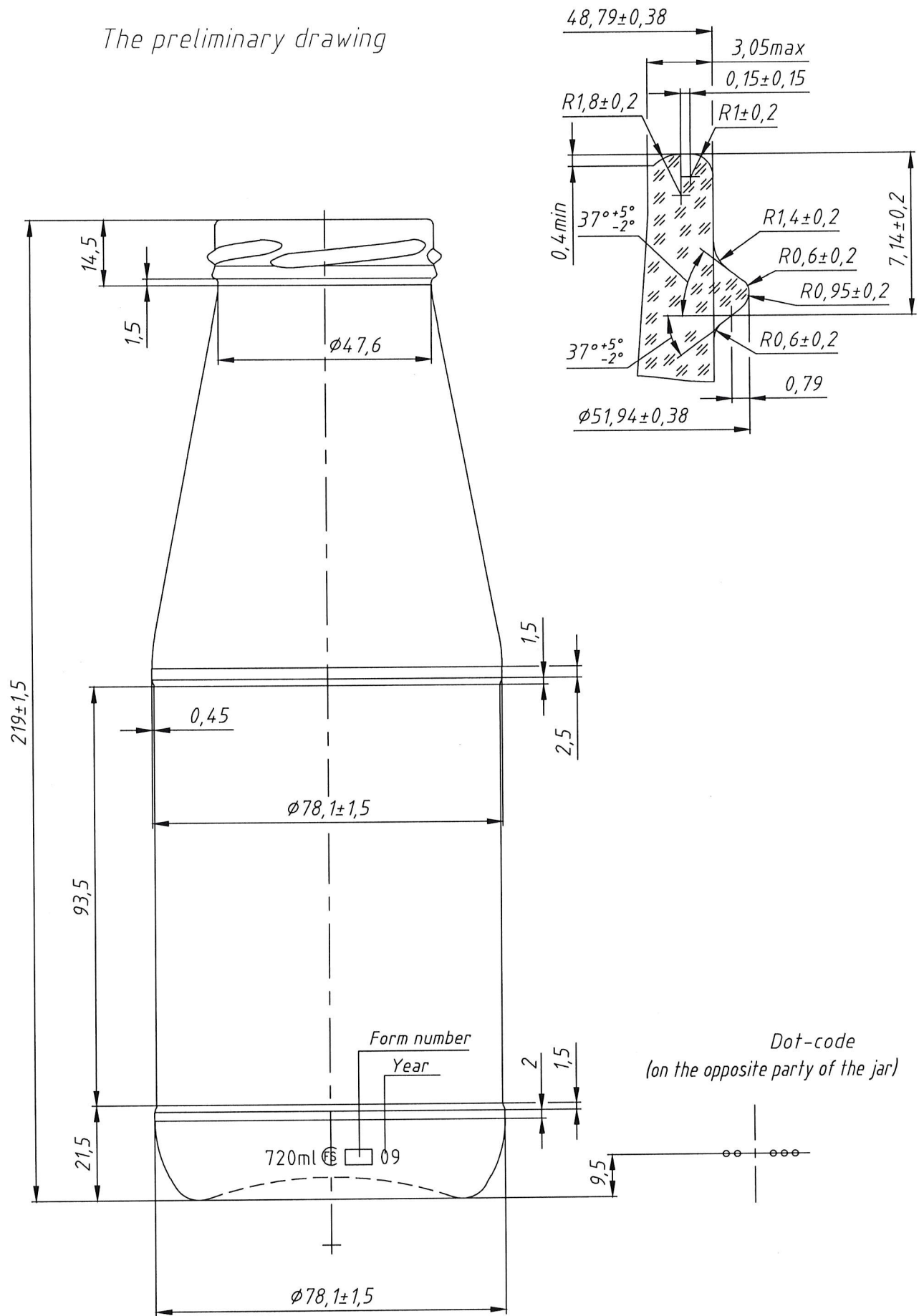
Original accession N	The signature and date	Instead of accession N	Duplicate accession N	The signature and date	A.		
					Bottle		
					"VERMUT" B-31-4-2000		
					Letter	Weight	Scale
							1:6
					Sheet	Sheets	1
					FLINT		FSC

**SUBJECT: Bottle III-53-720 PASSATA**

Anexa nr.11

Sr No	Description	Material	Quantity	
			Trial	Full set
1	BLOW MOULD	C I+COL(NECK, BASE&PARTING LINE+LOCK)		24
2	BOTTOM PLATE	C I+COL(MATCHING EDGE)		24
3	BLANK MOULD	C I+COL(NECK, BASE&PARTING LINE+LOCK)		28
4	BAFFLE	CAST IRON		28
5	INSERT	STEEL+COL(MATCHING EDGE)		50
6	NECK RING	BRONZE+COL(FULL CAVITY)		50
7	GUIDE PLATE	C I+COL(MATCHING EDGE)		60
8	COOLER	MILD STEEL		40
9	BLOW HEAD	CAST IRON		24
10	BLOW HEAD TUBE	MILD STEEL		24
11	TAKE OUT TONG	MINOX/BRONZE		30
12	PLUNGER NNPB	STEEL+COL(MATCHING EDGE)		50

The preliminary drawing



Full capacity,  $\text{cm}^3$  -  $720 \pm 10$   
 Advisable weight, g -  $310$   
 Finish TO-53

**SUBJECT: B-31-A**

Anexa nr.12

Sr No	Description	Material	Quantity	
			Trial	Full set
1	NECK RING	BRONZE+COL(FULL CAVITY)		45
2	GUIDE PLATE	C I+COLM		60
3	PLUNGER	STEEL+COLM		50

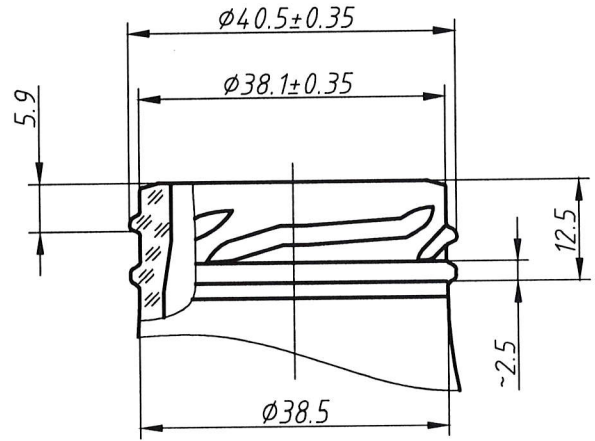
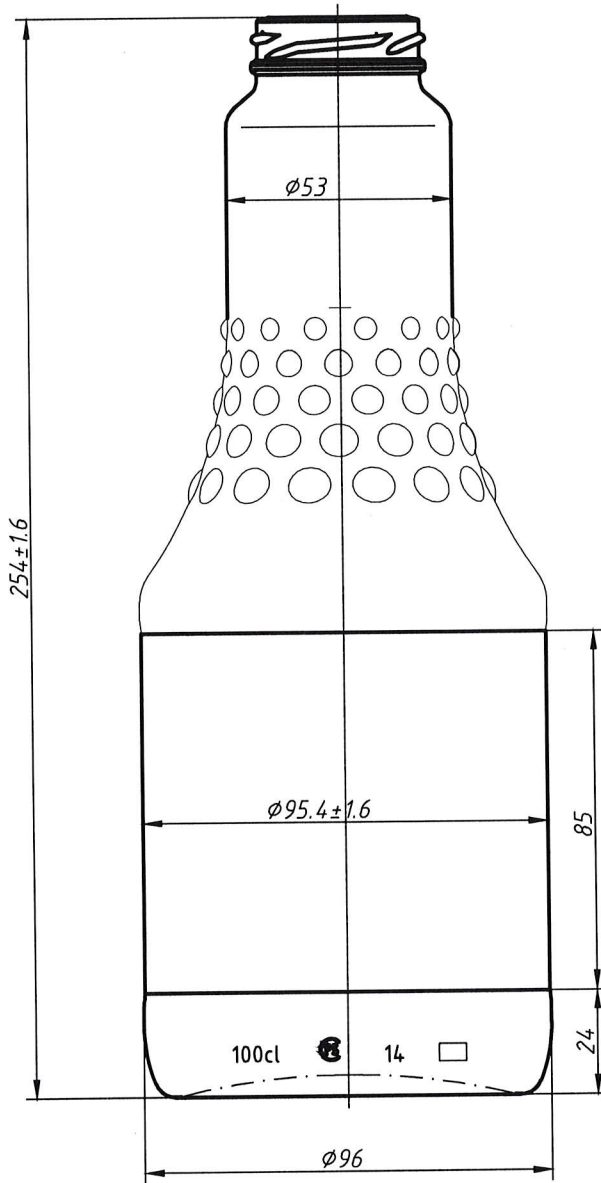
---

---

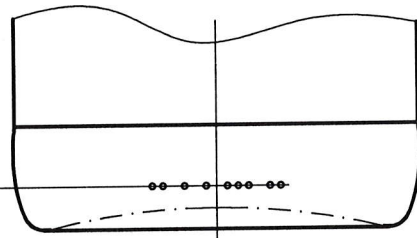
**SUBJECT: Bottle III-43-1000 Stamcom**

Anexa nr.13

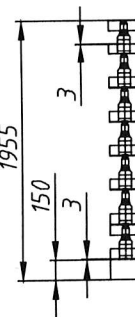
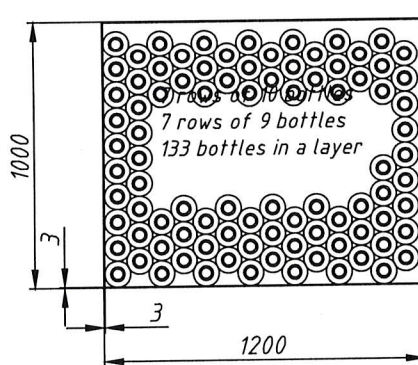
Sr No	Description	Material	Quantity	
			Trial	Full set
1	BLOW MOULD	C I+COL(NECK, BASE&PARTING LINE+LOCK)		24
2	BOTTOM PLATE	C I+COL(MATCHING EDGE)		24



The controllable sizes of a glass finish:  
 $\phi 40.5 \pm 0.35$   
 $\phi 38.1 \pm 0.35$   
 Finish type  
 Twist-off 43 "Regular"



The packing scheme of the bottles in the pallet



Quantity of layers: 7  
 Quantity of bottles in the pallet: 931  
 Weight of the pallet, kg: 467  
 Roof: a cardboard  
 Cover: thermocontractable

**Characteristics**  
 Nominal capacity, cm<sup>3</sup> -1000  
 Full capacity, cm<sup>3</sup> -1040±10  
 Weight recommended, g -

SM 195:1999 ; GOST 10117.1  
 Thickness of walls, at application of hardening, not less-1.2 mm  
 Thickness of a bottom at application of hardening, not less, -2.2 mm  
 Thermal stability, difference of temperatures, not less, °C -40  
 Internal hydrostatic pressure during 60±2s not less, kgf/cm<sup>2-3</sup>  
 Supplement resistance control - according to GOST 5717.1, for water resistance - do not conduct

**Maximum deviation**  
 from a vertical axis not more, mm 2,8  
 for height, mm ±1,6  
 for diameter of the body, mm ±1,6  
 The concave of the end of the coat of the neck is no more, mm 0,3

Non-parallelism of the end of the coat of the neck of the bottom plane is no more, mm 0,8  
 other sizes are given for manufacturing set of forms

Agreed:

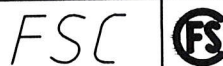
Chang.	Letter	Document N	Signature	Date
Designed		Djalo A.		16.07.14
Constr.-r principal		Djalo A.		16.07.14
Dir. of manuf.				

A.64

Bottle  
 "Stamcom" - Twist-off 43  
 "Regular" - 1000

Letter	Weight	Scale
		1:1,25
Sheet	Sheets	1

Glass colourless



Original accession N The signature and date

Instead of accession N Duplicate accession N

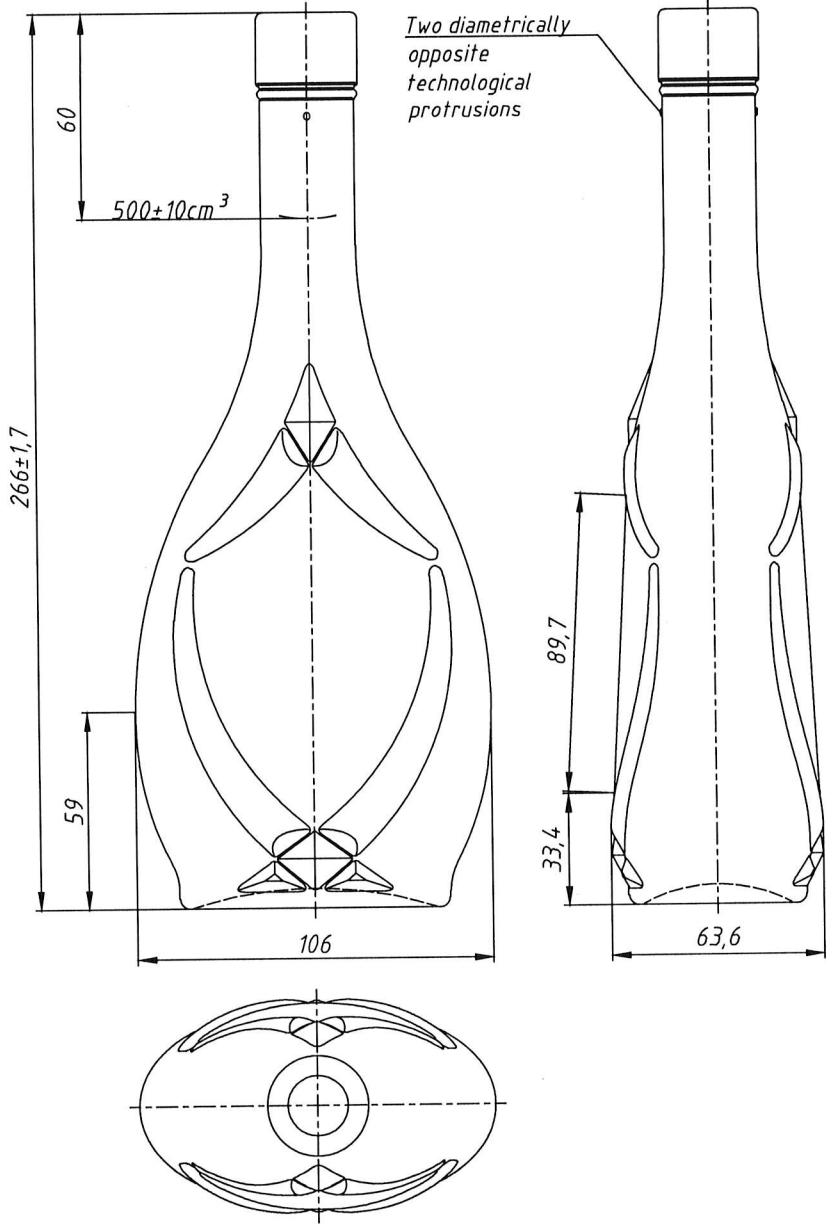
The signature and date

**SUBJECT: 0.5L Icona K**

Anexa nr.14

Sr No	Description	Material	Quantity	
			Trial	Full set
1	BLOW MOULD	C I+COL(NECK, BASE&PARTING LINE)+LOCK		24.00
2	BOTTOM PLATE	C I+COL(MATCHING EDGE)		24.00
3	BLANK MOULD	C I+COL(NECK, BASE&PARTING LINE)+LOCK		28.00
4	BAFFLE	C I+COL(MATCHING EDGE)		28.00
5	NECK RING	BRONZE+COL(FULL CAVITY)		50.00
6	GUIDE PLATE	C I+COL(MATCHING EDGE)		60.00
7	PLUNGER	C I+COL(MATCHING EDGE)		50.00
8	TAKE OUT TONG	MINOX/BRONZE		30.00
9	FUNNEL	CAST IRON		28.00
10	BLOW HEAD	CAST IRON		24.00
11	BLOW HEAD TUBE	STEEL		24.00

A.177



The controllable sizes of a glass finish  $\phi 30 \pm 0,5$   $\phi 18 \pm 0,5$  should be on depth 5 mm from a finish end face  $\phi 15,1 \text{ min}$  in other part of a mouth Finish type P-30-1

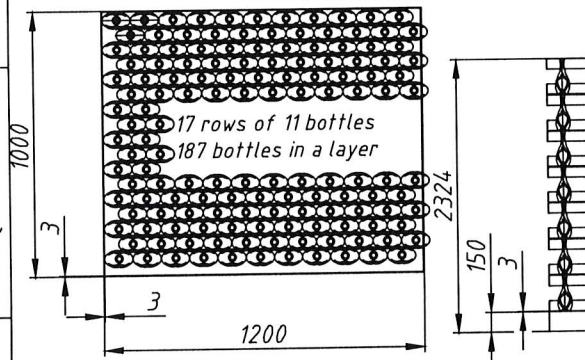
**Characteristics**  
 Nominal capacity,  $\text{cm}^3$  -  $500 \pm 10$   
 Weight recommended, g - 420

SM 195:1999 ; GOST 10117.1  
 Thickness of walls, at application of hardening, not less - 1.2 mm  
 Thickness of a bottom at application of hardening, not less, - 2.2 mm  
 Thermal stability, difference of temperatures, not less,  $^{\circ}\text{C}$  - 35  
 Internal hydrostatic pressure during  $60 \pm 2 \text{ s}$  not less,  $\text{kgf/cm}^2$  - 2

**Maximum deviation**  
 from a vertical axis not more, mm 3,7  
 for height, mm  $\pm 1,7$   
 other sizes are given for manufacturing set of forms

Agreed:

The packing scheme of the bottles in the pallet



Quantity of layers: 8  
 Quantity of bottles in the pallet: 1496  
 Weight of the pallet, kg: 683  
 Roof: a cardboard  
 Cover: thermocontractable

Original accession N / The signature and date / Instead of accession N / Duplicate accession N / The signature and date

Chang.	Letter	Document N	Signature	Date
Designed		Cosovschi P.		22.06.18
Constr-r principal		Cosovschi P.		22.06.18
Dir. of manuf.		Rotari N.V.		

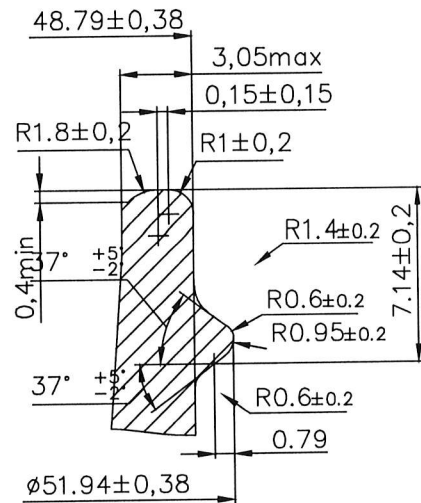
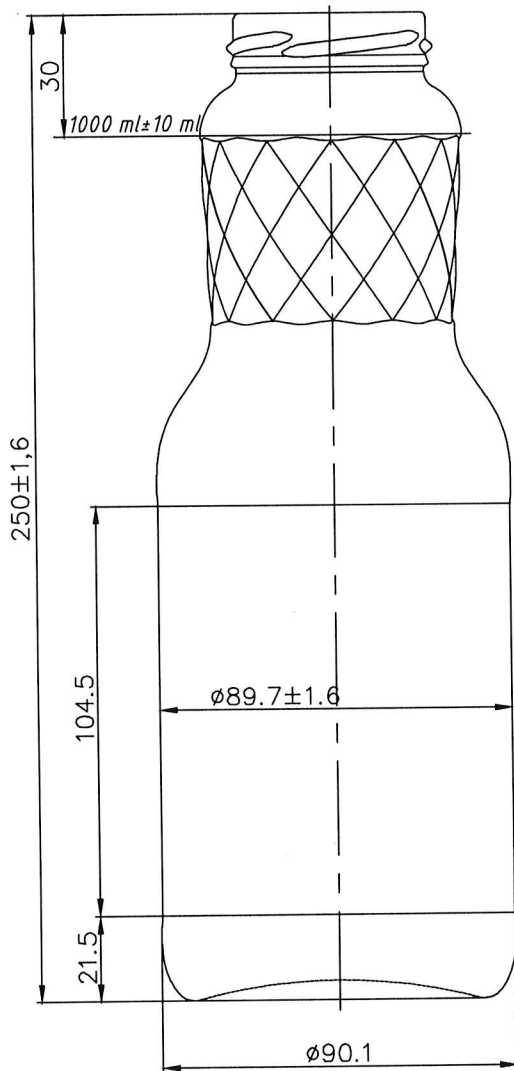
A.177  
 Bottle  
 "Икона К"-P-30-1-500  
 Glass colourless

Letter	Weight	Scale
		1:1,6
Sheet	Sheets	1
FSC		

**SUBJECT: Bottle III-53-1000 juice**

Anexa nr15

Sr No	Description	Material	Quantity	
			Trial	Full set
1	BLOW MOULD	C I+COL(NECK, BASE&PARTING LINE+LOCK)		24
2	BOTTOM PLATE	C I+COL(MATCHING EDGE)		24
3	BLANK MOULD	C I+COL(NECK, BASE&PARTING LINE+LOCK)		28
4	BAFFLE	CAST IRON		28
5	INSERT	STEEL+COL(MATCHING EDGE)		50
6	NECK RING	BRONZE+COL(FULL CAVITY)		50
7	GUIDE PLATE	C I+COL(MATCHING EDGE)		60
8	COOLER	MILD STEEL		40
9	BLOW HEAD	CAST IRON		24
10	BLOW HEAD TUBE	MILD STEEL		24
11	TAKE OUT TONG	MINOX/BRONZE		30
12	PLUNGER NNPB	STEEL+COL(MATCHING EDGE)		50



The controllable sizes of a glass finish  
 $\phi 51,94 \pm 0,38$   
 $\phi 48,79 \pm 0,38$   
 Finish type T0-53

Подпись и дата  
 Инв. N дубл.  
 Инв. N  
 Взам. инв. N  
 Подпись и дата  
 Инв. N подл.

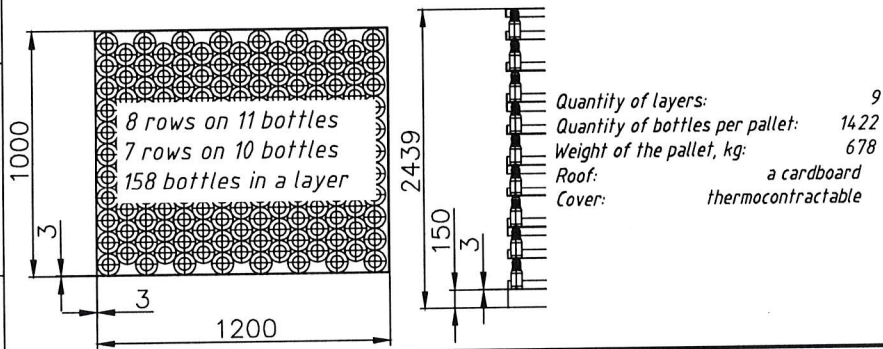
**Characteristics**  
 Brimful capacity, ml - 1000  
 Full capacity, ml - 1050±15  
 Weight recommended, g - 410

**SM 195:1999; GOST 10117.1**  
 Thickness of walls not less -14 mm, at application of hardening, not less -1.2 mm  
 Thickness of a bottom at application of hardening, not less, -2 mm  
 Thermal stability, difference of temperatures, not less, °C -40  
 Internal hydrostatic pressure during 5s not less, -3 kgf/cm<sup>2</sup>

**Maximum deviation**  
 from the vertical axis 2,8  
 on height, mm ±1.6  
 on diameter, mm ±1.6  
 Concavity of an end face of a nimbus mouth no more, mm 0.3  
 Not parallelism of an end face of a nimbus of a mouth of a plane of a bottom no more, mm -0.8

Approved

The packing scheme of the jars in the pallet



A.316				
Letter	Weight	Scale		
		1:1.25		
Бутылка "Juice"-T0-53-1000				
Sheet	Sheets 1			
Glass colourless				
FSC				

---

---

**SUBJECT: JAR III-82-3000**

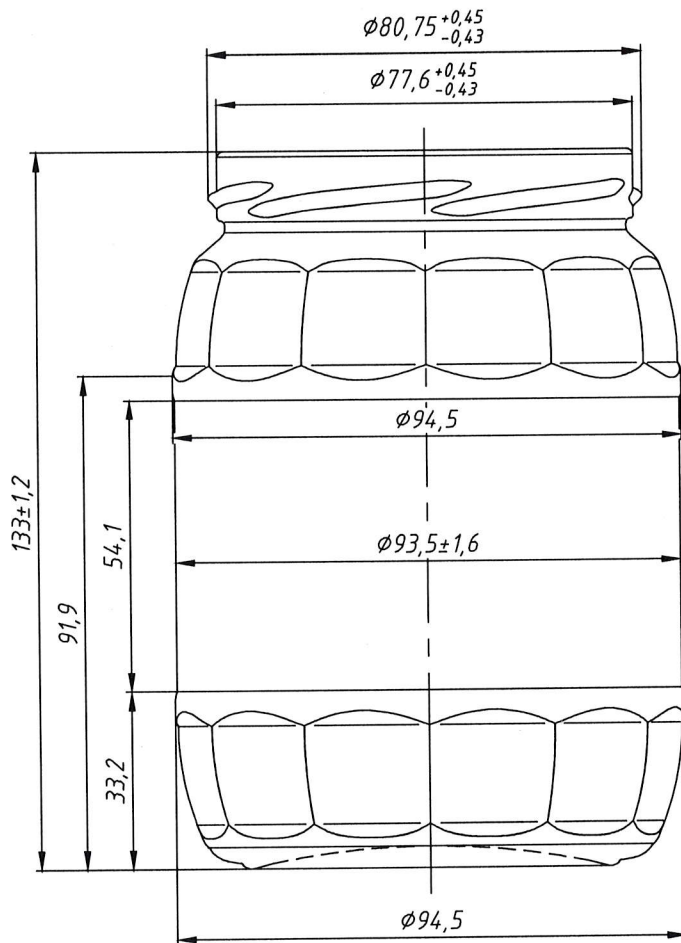
Anexa nr.16

Sr No	Description	Material	Quantity	
			Trial	Full set
13	INSERT-jar 3L	STEEL+COL(FULL CAVITY)		40

**SUBJECT: JAR III-82-720 Barrel**

Anexa nr.17

Sr No	Description	Material	Quantity	
			Trial	Full set
1	BLOW MOULD	C I+COL(NECK, BASE&PARTING LINE)+LOCK		24
2	BOTTOM PLATE	C I+COL(MATCHING EDGE)		24
3	BLANK MOULD	C I+COL(NECK, BASE&PARTING LINE)+LOCK		28
4	BAFFLE	CAST IRON		28
5	INSERT	STEEL+COL(FULL CAVITY)		60
6	PLUNGER	STEEL+COL(MATCHING EDGE)		50
7	COOLER	MILD STEEL		40
8	NECK RING	BRONZE+COL(FULL CAVITY)		50
9	GUIDE PLATE	C I+COL(MATCHING EDGE)		50
10	BLOW HEAD	CAST IRON		24
11	BLOW HEAD TUBE	MILD STEEL		24
12	TAKE OUT TONG	MINOX/BRONZE		30
13	INSERT-jar 3L	STEEL+COL(FULL CAVITY)		40



Контролируемые размеры  
венчика горловины:

$\phi 80,75^{+0,45}_{-0,43}$   
 $\phi 77,6^{+0,45}_{-0,43}$

Венчик типа III-82

Техническая характеристика

Номинальная вместимость,  $ст^3$  - 720  
Полная вместимость,  $ст^3$  -  $720 \pm 15$   
Масса рекомендуемая,  $г$  - 290

SF-37780441-003:2010; ГОСТ 5717.1

Толщина стенок не менее,  $мм$  - 1,4, при

нанесении упрочнения - 1,2

Толщина дна не менее,  $мм$  - 2,0

Термостойкость, перепад температур, не

менее,  $^{\circ}C$  - 40

Внутреннее гидростатическое давление в

течение 5с не менее,  $кг/см^2$  - 3

Сопротивление усилию сжатия не менее,

$N$  - 2200

Предельные отклонения

по высоте,  $мм$   $\pm 1,2$

по диаметру,  $мм$   $\pm 1,6$

Вогнутость торца венчика

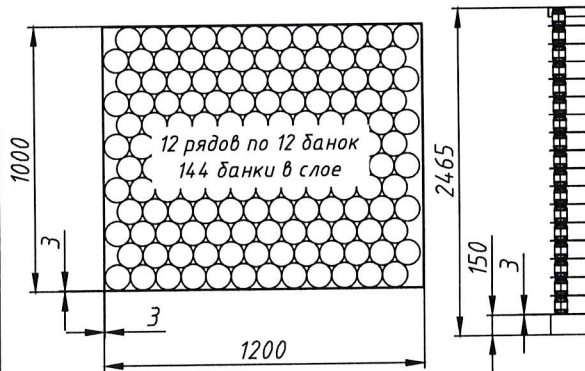
горловины не более,  $мм$  0,3

Остальные размеры даны для изготовления

формокомплекта

Согласовано:

Схема упаковки банок в паллете



Кол-во слоев: 17  
Кол-во банок в паллете: 2448  
Масса паллета,  $кг$ : 770  
Крыша: картон  
Чехол: термоусадочный

Инв. N подл.	Подпись и дата
Взам. инв. N	Инв. N дубл.
Подпись и дата	Инв. N дубл.
Инв. N подл.	Подпись и дата

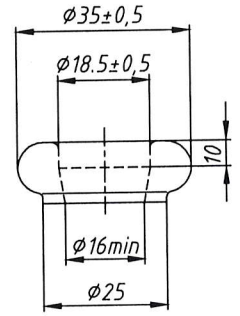
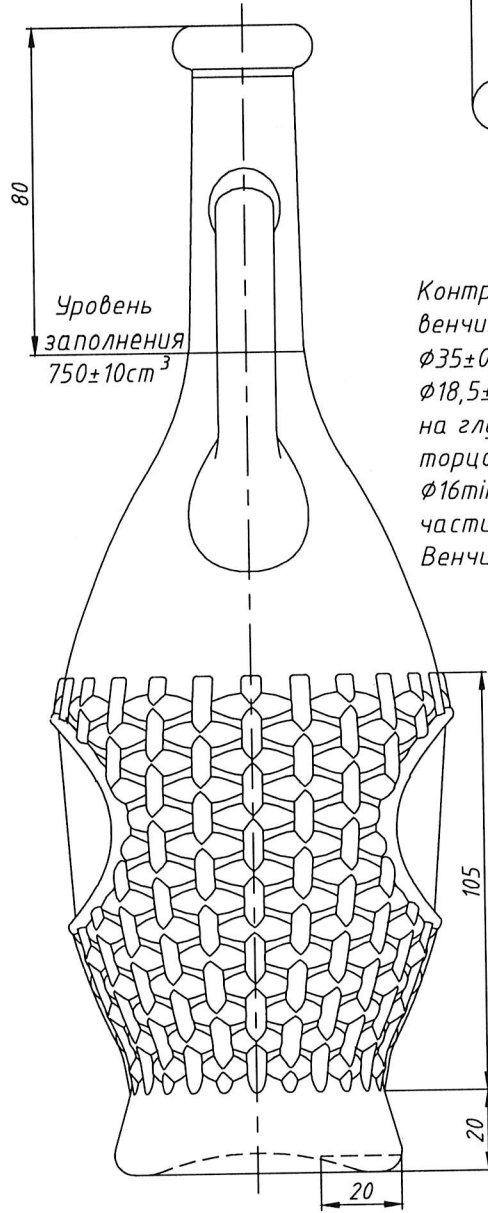
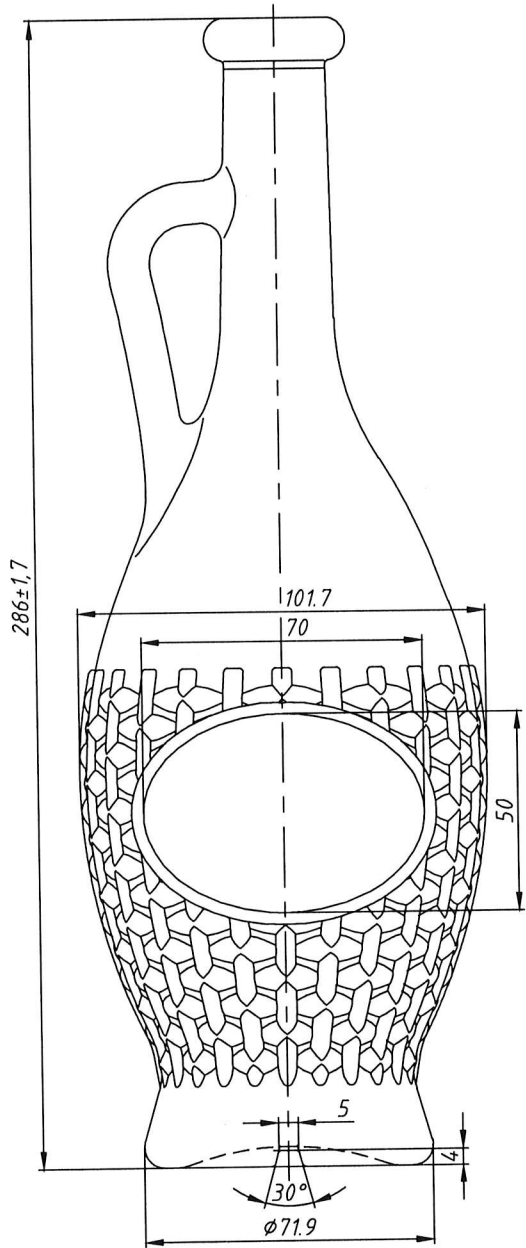
Изм.	Лит.	N докум.	Подпись	Дата	A.80	Лит.	Масса	Масштаб
Разработ.		Косовский П.		21.04.21				1:1
Гл. констр.		Косовский П.		21.04.21				
Дир. пр-ва		Балтажи И.						
Банка III-82-720 "Barrel"						Лист 1		
Стекло бесцветное						FSC		

**SUBJECT: 0,75L Izabela**

Anexa nr.18

Sr No	Description	Material	Quantity	
			Trial	Full set
1	NECK RING	BRONZE+COL(FULL CAVITY)		40
2	GUIDE PLATE	C I+COLM		50
3	PLUNGER	STEEL+COLM		50

A.319



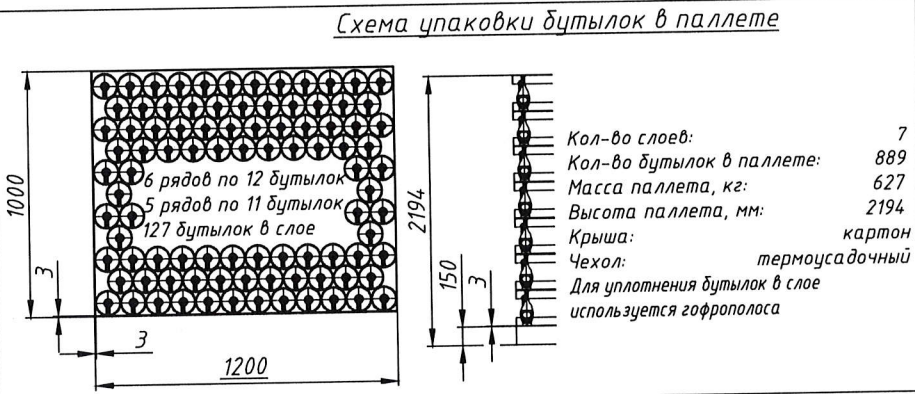
Контролируемые размеры венчика горловины:  
 $\phi 35 \pm 0,5$   
 $\phi 18,5 \pm 0,5$  должен быть на глубине до 10 мм от торца венчика  
 $\phi 16 \text{ min}$  в остальной части горловины  
 Венчик типа VP<sub>7A</sub>

Подпись и дата  
 Инв. и дубл.  
 Взам. инв. и  
 Подпись и дата  
 Инв. и подл.

**Техническая характеристика**  
 Номинальная вместимость по уровню заполнения, см<sup>3</sup> - 750±10  
 Масса рекомендуемая, г - 645  
 SM 195:1999 ; ГОСТ 10117.1  
 Толщина стенок не менее, мм-1,4, при нанесении упрочнения-1,2  
 Толщина дна не менее, мм-2,5, при нанесении упрочнения-2,2  
 Термостойкость, перепад температур, не менее, °С -40  
 Внутреннее гидростатическое давление в течение 60±2с не менее, kgf/cm<sup>2</sup>-2

**Предельные отклонения**  
 от вертикальной оси не более, мм 4,0  
 по высоте, мм ±1,7  
 Остальные размеры даны для изготовления формокомплекта

Согласовано:



Изм.	Лит.	И. докум.	Подпись	Дата
Разработ.		Попа Д.Н.		18.01.13
Гл. констр.		Джало А.И.		18.01.13
Дир. пр-ва		Ротарь Н.В.		

A.319

Бутылка "Isabella"-VP<sub>7A</sub>-750

Стекло бесцветное

Лит.	Масса	Масштаб
		1:1,25
Лист	Листов	1

FSC

Копировал Формат А3

---

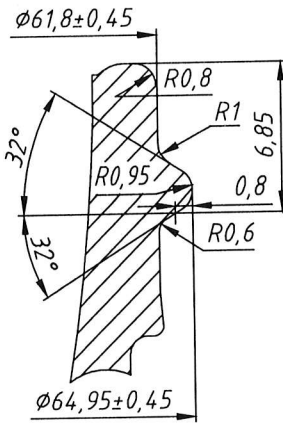
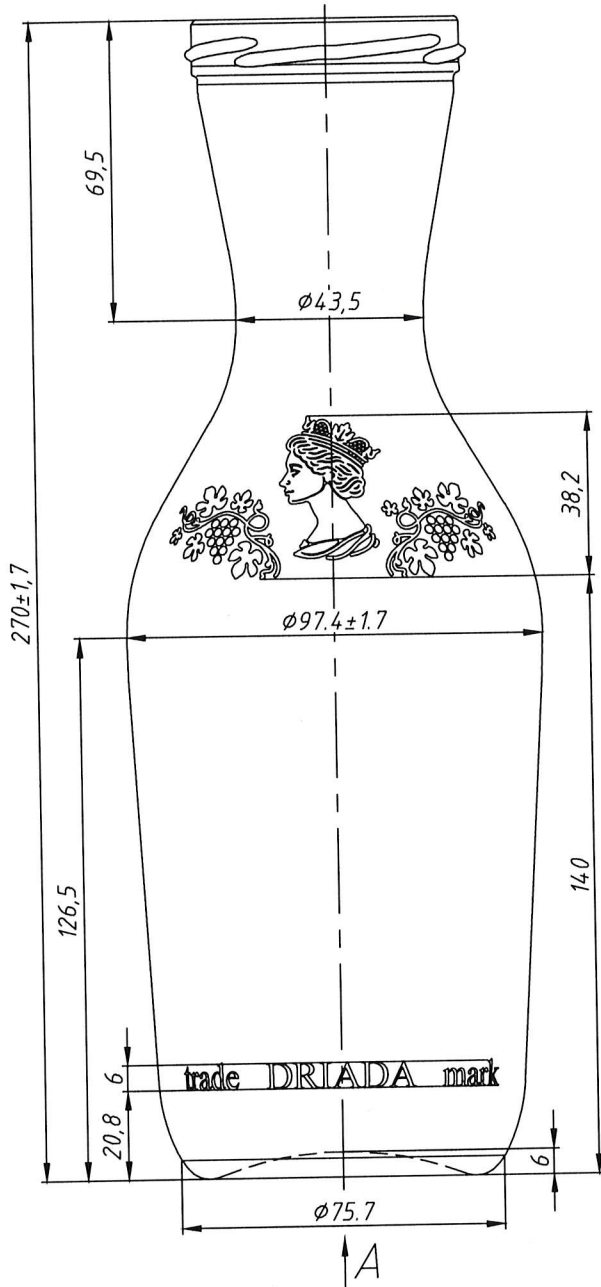
---

**SUBJECT: Bottle III-66-1000 Cuvshin**

Anexa nr.19

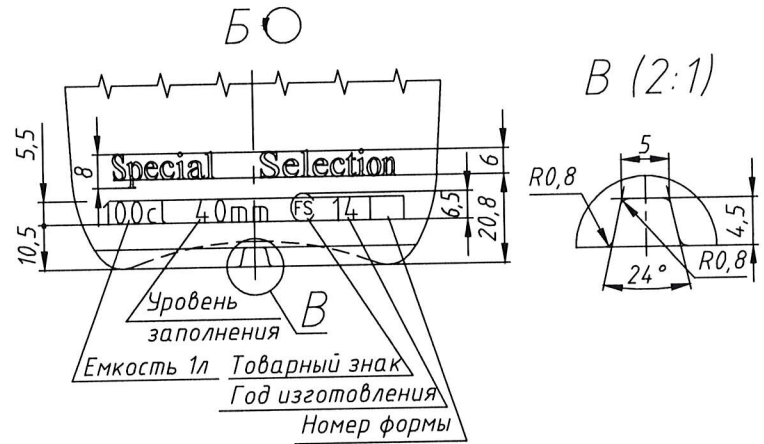
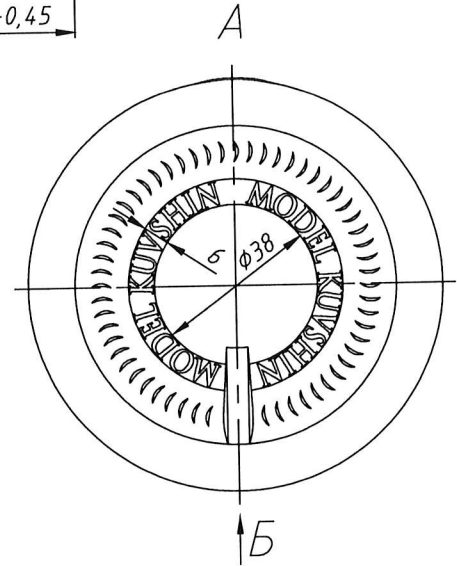
Sr No	Description	Material	Quantity	
			Trial	Full set
1	BLOW MOULD	C I+COL(NECK, BASE&PARTING LINE+LOCK)		24
2	BOTTOM PLATE	C I+COL(MATCHING EDGE)		24

A.332

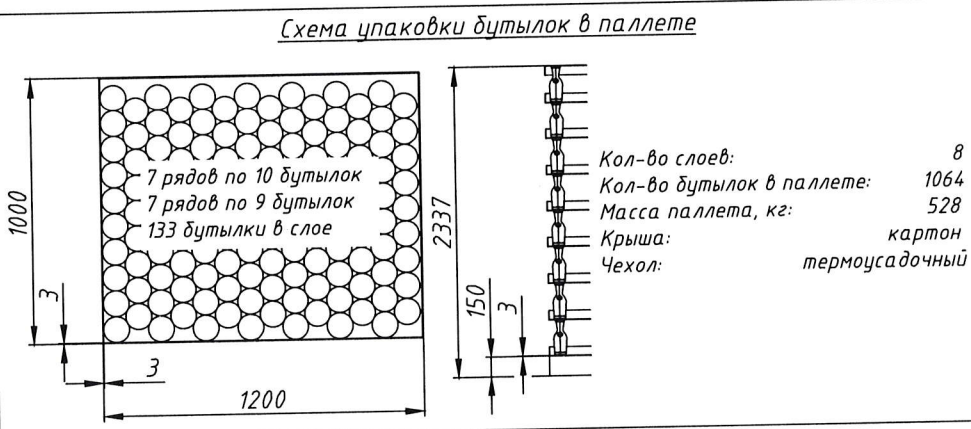


Контролируемые размеры  
венчика горловины:  
 $\phi 64,95 \pm 0,45$   
 $\phi 61,8 \pm 0,45$

Венчик типа III-66



Инв. N подл.	Инв. N дубл.	Взам. инв. N	Подпись и дата	Техническая характеристика	
				Номинальная вместимость, см <sup>3</sup> -1000 Полная вместимость, см <sup>3</sup> -1080±10 Масса рекомендуемая, г -450	
Инв. N подл.	Инв. N дубл.	Взам. инв. N	Подпись и дата	SM 195:1999 ; ГОСТ 10117.1	
				Толщина стенок не менее, мм-1,2, при нанесении упрочнения-1,0 Толщина дна не менее, мм-2,0 Термостойкость, перепад температур, не менее, °С -40 Внутреннее гидростатическое давление в течение 60±2с не менее, kgf/cm <sup>2</sup> -2	
Инв. N подл.	Инв. N дубл.	Взам. инв. N	Подпись и дата	Предельные отклонения	
				по высоте, мм ±1,7 по диаметру, мм ±1,7 Вогнутость торца венчика горловины не более, мм 0,3 Непараллельность торца венчика горловины плоскости дна не более, мм 1,0 Остальные размеры даны для изготовления формокомплекта	
Инв. N подл.	Инв. N дубл.	Взам. инв. N	Подпись и дата	Согласовано:	



A.332				
Изм.	Лит.	N докум.	Подпись	Дата
Разработ		Джало А.И.		17.07.15
Гл. констр		Джало А.И.		17.07.15
Дир. пр-ва		Ротарь Н.В.		
Буылка "KUVSHIN NEW"-III-66-1000				
Лист	Масса	Масштаб		
		1:1,25		
Лист	Листов	1		
Стекло бесцветное				
FSC				