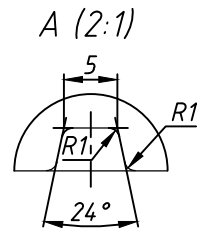
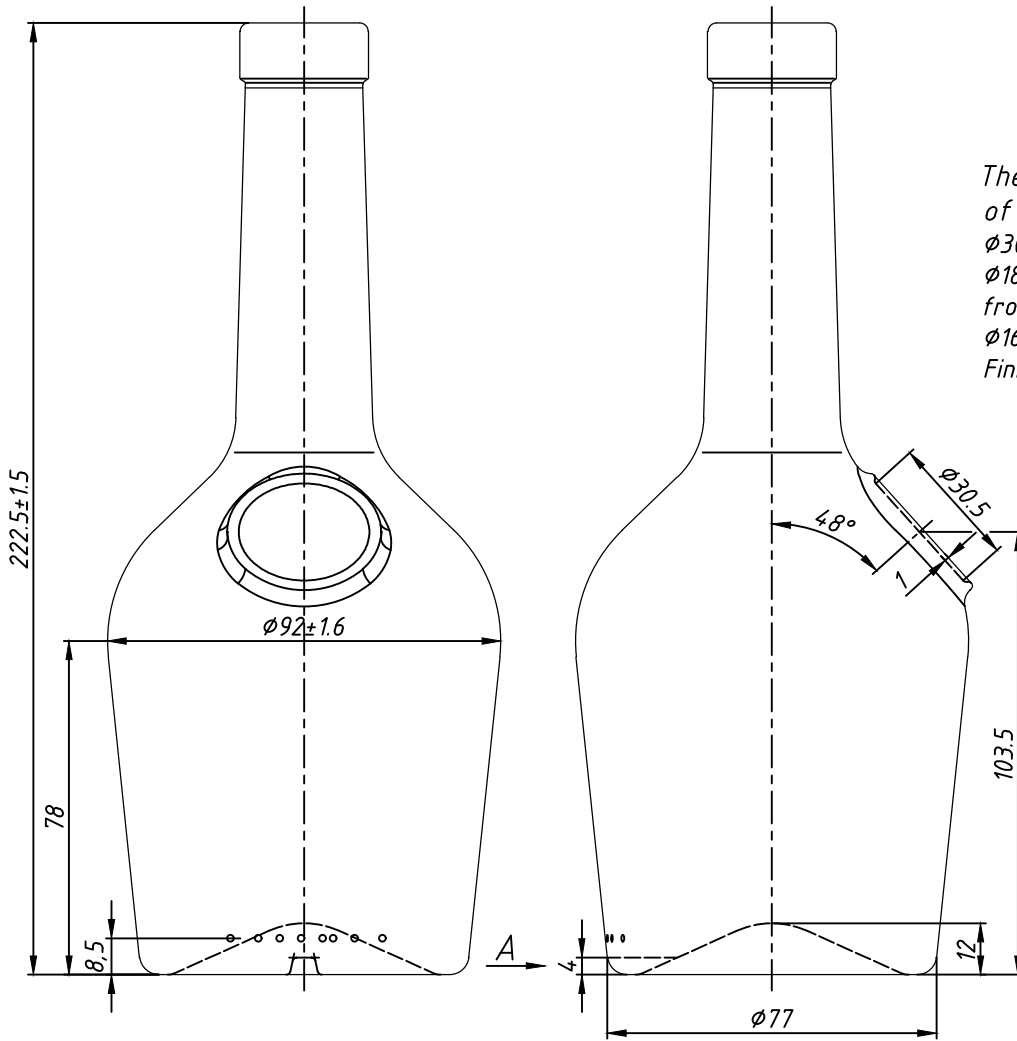


The controllable sizes of a glass finish
 $\phi 30 \pm 0.5$
 $\phi 18 \pm 0.5$ depth must be up to 10 mm from the top of the finish
 $\phi 16.1$ min in other part of a mouth
 Finish type VP₄



Characteristics

Nominal capacity, cm³ - 500
 filling level, cm³ - 525 ± 10
 Weight recommended, g - 370

SM 195:1999 ; GOST 10117.1

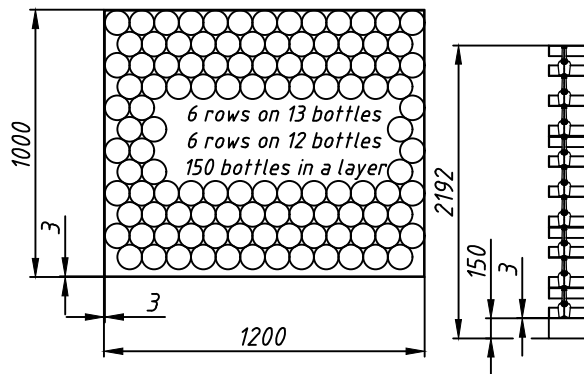
Thickness of walls, at application of hardening, not less - 1.2 mm
 Thickness of a bottom at application of hardening, not less, - 2.2 mm
 Thermal stability, difference of temperatures, not less, °C - 35
 Internal hydrostatic pressure during 60 ± 2s not less, kgf/cm² - 2

Maximum deviation

from a vertical axis not more, mm 3.1
 on height, mm ± 1.5
 on diameter, mm ± 1.6
 other sizes are given for manufacturing set of forms

Agreed:

The packing scheme of the bottles in the pallet



Quantity of layers: 9
 Quantity of bottles in the pallet: 1350
 Weight of the pallet, kg: 553
 Roof: a cardboard
 Cover: thermocontractable

The signature and date
 Duplicate accession N
 Instead of accession N
 The signature and date
 Original accession N

A.281

Chang.	Letter	Document N	Signature	Date
Designed		Djalo A. I		24.04.14
Constr-r principal		Djalo A. I		24.04.14
Dir of manufat.		Rotari N. V.		

Bottle
 "Roche"-VP₄-500

Glass colourless

Letter	Weight	Scale
		1:1,25
Sheet	Sheets	1
FSC		