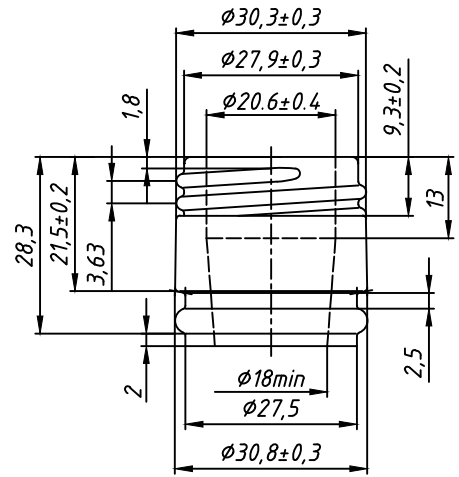
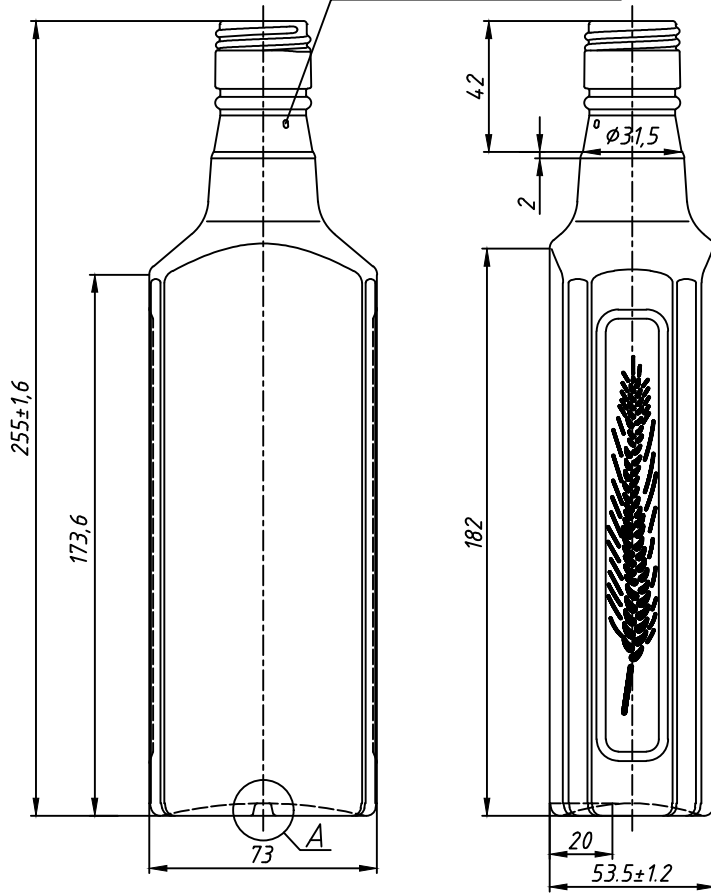


A.288

Two diametrically opposite technological protrusions



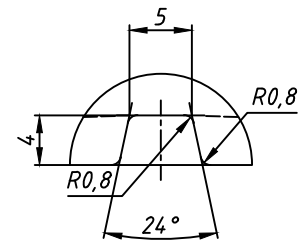
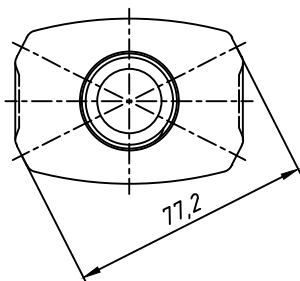
The controllable sizes of a glass finish

- Ø30,3±0,3
- Ø30,8±0,3
- Ø20,6±0,4 to the depth 13 mm from the top
- Ø18min in the rest of the neck

Finish type B-31-A

A (2,5:1)

(execute orientator from the opposite side bottle)



Characteristics

Nominal capacity, cm<sup>3</sup> -500  
Full capacity, cm<sup>3</sup> -515±10  
Weight recommended, g - 422

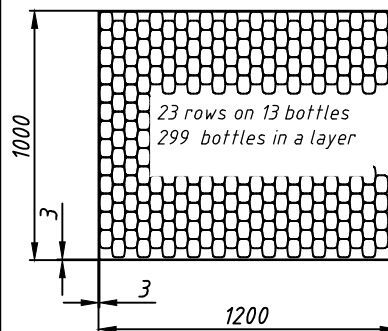
SM 195:1999 ; GOST 10117.1

Thickness of walls not less -1.4 mm, at application of hardening, not less -1.2 mm  
Thickness of a bottom not less -2.5 mm, at application of hardening, not less, -2.2 mm  
Thermal stability, difference of temperatures, not less, °C -35  
Internal hydrostatic pressure during 60±2s not less, kgf/cm<sup>2</sup> -1

Maximum deviations

from a vertical axis not more, mm 3,6  
on height, mm ±1,6  
by minimum body size (53,5), mm ±1,2

The packing scheme of the bottles in the pallet



Quantity of layers: 6  
Quantity of bottles in the pallet: 1794  
Weight of the pallet, kg: 804  
Roof: a cardboard  
Cover: thermocontractable  
For sealing bottles in a layer corrugated strip is used

The signature and date

Instead of accession N Duplicate accession N

Original accession N The signature and date

Chang	Letter	Document N	Signature	Date
	Designed	Djalo A. I.		18.04.10
	Constr-r principal	Djalo A. I.		18.04.10
	Dir. of manuf			

A.288

Bottle  
"Колосок"-B-31-A-500

Letter	Weight	Scale
		1:1.6
Sheet	Sheets	1
FSC		